



# H1N1 Update

## from the Fort Wayne-AlLEN County Department of Health

### January 25, 2010 H1N1 National Info

- CDC estimates that between 39 million and 80 million cases of 2009 H1N1 occurred between April and December 12, 2009. The mid-level in this range is about 55 million people infected with 2009 H1N1.
- CDC estimates that between about 173,000 and 362,000 2009 H1N1-related hospitalizations occurred between April and December 12, 2009. The mid-level in this range is about 246,000 H1N1-related hospitalizations.
- CDC estimates that between about 7,880 and 16,460 2009 H1N1-related deaths occurred between April and December 12, 2009. The mid-level in this range is about 11,160 2009 H1N1-related deaths.
- Total number of US deaths estimated to be 16,000 (includes Jan data)

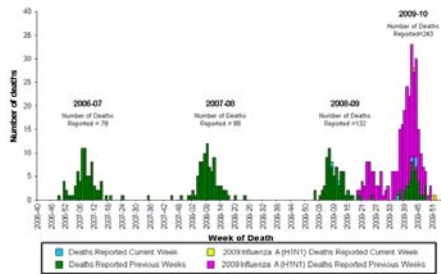
There have been 243 known pediatric deaths

Case fatality is reported to be 0.4% (compared with 0.3% in Europe).

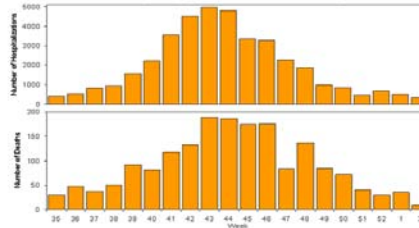
The death rate for seasonal flu is around 0.1% for seasonal flu.

The death rate for the Spanish flu (1918) was 2.4%

Number of Influenza-Associated Pediatric Deaths by Week of Death: 2006-07 season to present

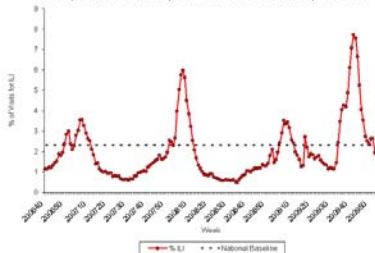


Weekly Laboratory-Confirmed Influenza-Associated Hospitalizations and Deaths Reported to AHDR, National Summary, August 30, 2009 – January 16, 2010



- Hospitalization rates for children aged 0-4 years and 5-17 years were 5.9 and 2.5 per 10,000, respectively. Rates for adults aged 18-49 years, 50-64 years, and ≥ 65 years were 2.2, 3.0 and 2.5 per 10,000, respectively.
- Currently, ninety-eight percent of subtyped influenza A viruses reported to CDC were 2009 influenza A (H1N1) viruses.

Percentage of Visits for Influenza-like Illness (ILI) Reported by the U.S. Outpatient Influenza-like Illness Surveillance Network (ILI-Net), Weekly National Summary, October 1, 2006 – January 16, 2010



## Vaccination Information

Initial target group	H1N1 vaccination coverage	
	No. surveyed	% vaccinated
Adults aged 25--64 years with high-risk conditions	4,044	11.6
Health-care personnel	3,329	22.3
Pregnant women	150	38
Adults living or caring for infant aged <6 months	402	13.9

## Tuberculosis Information

I thought you might find it interesting to see our TB data for 2009. Interesting to note our shift to foreign born (reflects national trend) and the fact that only 65% are pulmonary. Just like in medical school: think TB!

	Number	Percentage
Gender		
Female	3	21.4%
Male	11	78.6%
Race		
African American	4	28.6%
Asian	9	64.3%
Caucasian	1	7.1%
Hispanic	0	0.0%
Foreign Born	9	64.3%
Site		
Pulmonary	9	64.3%
Pleural	1	7.1%
Lymphatic	3	21.4%
Bladder	1	7.1%

## Haiti Volunteers

For those of you who see patients who are considering a volunteer missions trip to Haiti: we are partnering with the Indiana State Department of Health and our local hospitals to provide the necessary immunizations and information they need to travel safely. More information to follow. If you would like to counsel your own patients, CDC has a great website:

<http://wwwnc.cdc.gov/travel/content/news-announcements/guidance-us-residents-haiti.aspx>

If you would like to help us counsel volunteers – call Joanna at 449-4371 and we will provide you specific information on when and where the volunteer clinic will be.

Questions call Deb McMahan, MD