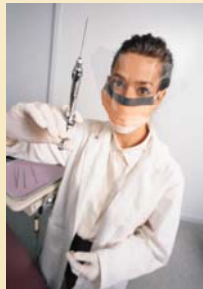




Fort Wayne-AlLEN County Department of Health Divisions and Programs

2008

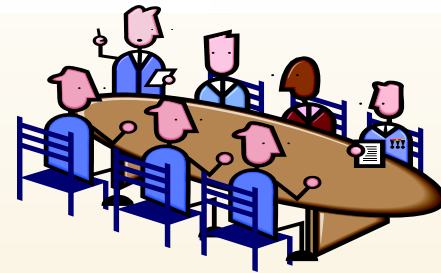
presented by
John Silcox
Communications Director





Fort Wayne-Alen County Department of Health

Board of Health



In accordance with Indiana Law, the Fort Wayne-Alen County Board of Health is appointed by elected officials in order to represent the needs of the community.

The Mayor of Fort Wayne appoints three (3) members, and the Board of Commissioners of Allen County appoints four (4) members.

Members of the Board for 2008

- ✦ Gregory Schmitt, MD (President)
- ✦ Janet Paunwar (Vice President)
- ✦ Terri Farr, RN
- ✦ Mark Schomogyi, MD
- ✦ Jay Patel, MD
- ✦ Joseph Steensma, CIH, MPH
- ✦ Rick Regedanz



Organizational Structure





Fort Wayne-Alten County Department of Health

Average Public Health Professionals per 100,000 population

138 Nationally

76 Midwest

46 State of Indiana

18
ALLEN COUNTY

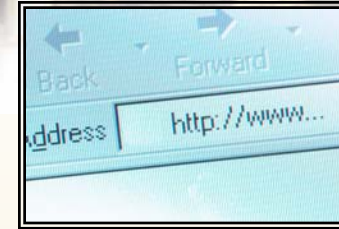
Communications Division



Responsible for:

- ✦ Drafting, coordinating and issuing all Departmental press releases.
- ✦ Publishing the Annual Report, and coordinating and conducting all media-related events.
- ✦ The Health Insurance Portability and Accountability Act (HIPAA) Compliance Officer, who assures compliance with all applicable laws regarding the release of public and medical information.
- ✦ Assisting in the development of the Department's website and acting as the back-up webmaster.

Informatics Division



Responsible for:

- ✦ Developing and maintaining surveillance and information systems relevant to public health for the entire Department of Health.
- ✦ Acts as the Department's I/T Director and HIPAA Security Officer (and assists with technological needs and policies).
- ✦ Maintaining the Department's website, with assistance from Communications Division. www.fw-ac-deptofhealth.com
- ✦ Utilizing the Geographic Information System (GIS) to create maps and analyze data for other Department divisions.

An aerial photograph of a city skyline with various buildings and greenery. In the upper right corner, there is a 3D-style illustration of a yellow and blue calculator with a white paper sheet behind it.

Finance Division

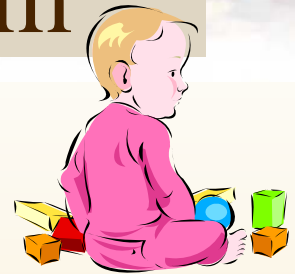
Responsible for:

- ✦ Overseeing all expenditures, disbursements and receipts for the Department of Health which includes grants and donation funds. Budgets falling under the Department of Health include Vector Control, Tuberculosis Outpatient Clinic, Local Health Maintenance Fund, Tobacco Settlement Funds plus numerous other grants.
- ✦ Make sure that guidelines for expenditures, set forth by the Allen County Council, Board of Commissioners and the Indiana State Department of Health (ISDH) are followed.
- ✦ Keeping all personnel, payroll, and attendance records. The Department of Health has over 60 employees.



Childhood Lead Prevention Program

Responsible for:



- ✦ Providing program management, case management and environmental services to children with blood lead levels above 15 $\mu\text{g}/\text{dL}$.
- ✦ Working with Adult Protective Services and Child Protective Services to investigate cases of adult and child endangerment.

???

105 in 2007

Community Health Nursing



Responsible for:

- ✦ Childhood lead screening and case management.
- ✦ Refugee health screenings.
- ✦ Adult and childhood immunization clinic.
- ✦ Coordinating the Community Infectious Disease Network of Allen County (CIDNAC)

The Division continues to support the emergency preparedness of the Department of Health. The Division maintains community involvement with organizations such as First Steps, Step Ahead, Refugee Community Care Services, and the Suicide Prevention Council. The Division is a clinical site for nursing students from Indiana University Purdue University, University of Saint Francis, Indiana Wesleyan University, and Ball State University.

Emergency Preparedness

Responsible for:

- ✦ Developing Departmental Emergency/Disaster Plans (natural and man-made)
- ✦ Developing Plans for Mass Prophylaxis/Treatment, Environmental Surety, and Mental Health for Disasters
- ✦ Liaison between other community partners for preparedness and disaster planning.

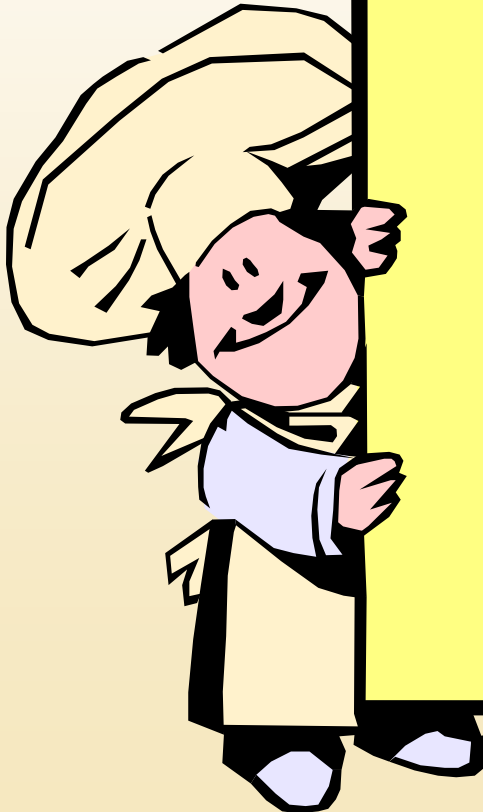


Food Protection Division



Responsible for:

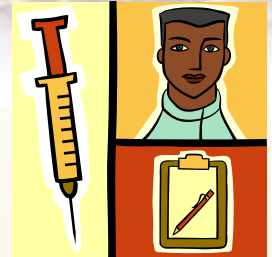
- Licensure and inspection of all annual, mobile, and temporary food retail establishments.
- Investigating food-related consumer complaints.
- Responding to all vehicle accidents involving food.
- Reviewing architectural plans for establishments under construction or those engaged in remodeling projects.
- Regulating Tattoo & Body Piercing establishments.



???

Nearly 1,600

HIV/STD Prevention and STD Clinic



Responsible for:

- ✦ Intervening in the spread of HIV and other sexually transmitted diseases (STDs) and reducing the complications of these diseases .



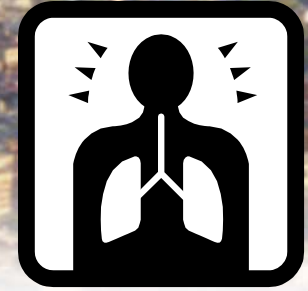
Prevention activities include:

- ✦ Contact tracing
- ✦ Screening
- ✦ Providing education in a timely manner

Intervention systems include:

- ✦ Surveillance
- ✦ Case detection through screening
- ✦ Treatment of known cases
- ✦ Case follow-up
- ✦ Education

Infectious Disease Center



Responsible for:

- ✦ Evaluating and treating cases of active tuberculosis (TB) disease, their contacts, and individuals with latent TB infection (LTBI)
- ✦ Communicable Disease Investigations

Services include:

- ✦ Tuberculin skin testing (TST)
- ✦ Chest x-ray referrals
- ✦ Directly observed therapy (DOT)
- ✦ Satellite phlebotomy
- ✦ Nurse case management, and medical evaluation and follow up by physicians.
- ✦ Communicable Disease Investigations (as well as Outbreaks and Education)



Laboratory Services



Responsible for:

- ✦ Conducting water samples (pool and septic), and cultural and serological analyses for the STD Clinic.
- ✦ Providing services to other Divisions such as performing mosquito assays for Vector Control, product complaint determinations for Food Protection, and blood lead assays for Childhood Lead Poisoning Prevention Program.



Pollution Control



Responsible for:

- ✦ Design, review, inspection, and complaint investigation of on-site sewage disposal systems.
- ✦ Administration and operation of the public swimming pool program.
- ✦ Environmental protection services such as investigation of underground storage tanks, hazardous materials spills, and outdoor air quality.



Vector Control and Environmental Services

Responsible for:

- ✦ Mosquito surveillance of arboviral diseases and controlling Norway rats on residential properties.
- ✦ Collecting and testing adult mosquitoes for both West Nile virus and St. Louis Encephalitis virus.
- ✦ Collecting larval specimens from standing water and applying chemical to control larvae.
- ✦ Nighttime spraying to eliminate adult mosquitoes when mosquito tests are positive for the virus(es).
- ✦ Carrying out site assessments of residential properties for signs of rodent infestation.
- ✦ Conducting investigations involving flea, tick and roach infestation; and human exposure to rabies from animal bites.



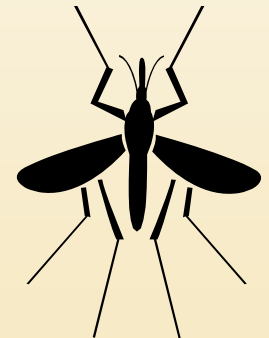
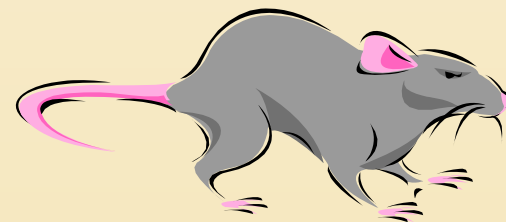
Vector Control (cont'd)

Responsible for Environmental Services Complaints such as:

- ◆ Unsafe Living Conditions and/or Adult Endangerment
- ◆ Animal Waste or fecal matter in a yard
- ◆ Garbage and Trash (depending on property location – City/County)
- ◆ Rodents (live or dead)
- ◆ Noxious Odors
- ◆ Mold (new information on our website)
- ◆ Cockroaches
- ◆ Fleas/Ticks
- ◆ Mosquitoes
- ◆ Standing Water
- ◆ Dead Birds

???

1 in 2007



Vital Records Division



Responsible for:

- ✦ Filing all records of birth and death that occur in Allen County as well as the issuance of all certified birth and death certificates.
- ✦ Preparing and filing Paternity Affidavits and Paternity Affidavits Upon Marriage and coordinating the receipt of adoption records and court orders for birth record changes.
- ✦ Communicating with personnel from numerous governmental and social agencies requesting and/or providing birth and death verification and related information.

Newly-enacted federal regulations will have a large impact on the Vital Records Division by requiring tighter identification controls on who may obtain a certified copy of a document. Minimum standards for birth certificates were mandated in the bill, all of which have been met by The Division.

???

Nearly 7,000 births in Allen County each year



Fort Wayne-AlLEN County Department of Health

QUESTIONS???

www.fw-ac-deptohealth.com

(260) 449-7561