

Annual Report 2009

**Promoting the health, safety
and well-being of all residents**



- Emergency Preparedness
- Immunizations ■ Infectious Disease
- STD Clinic ■ HIV/STD Prevention
- Food & Consumer Protection ■ Pollution Control
- Healthy Homes ■ Vector Control
- Informatics ■ Communications



**Fort Wayne-AlLEN County
Department of Health**

Annual Report 2009



Annual Report 2009

Fort Wayne-AlLEN County Department of Health

1 E. Main St., 5th Floor
Fort Wayne, IN 46802
Voice: (260) 449-7561
Fax: (260) 427-1391
www.allencountyhealth.com

*Deborah A. McMahan, MD
Health Commissioner*

*Mindy Waldron, BS, REHS, CFSP
Department Administrator*

*Designed and Edited by John Silcox
Cover photo by Mindy Waldron*

Table of Contents

PART 1 OVERVIEW

Message from the Health Commissioner..... 3
 Message from the Department Administrator..... 4
 Elected Officials..... 5
 Executive Board of Health..... 6
 Organizational Structure..... 7
 About the Department..... 8
 Community Partners..... 9
 State/Local Partnerships..... 10

PART 2 ACHIEVEMENTS & HIGHLIGHTS

Communications/Media..... 12
 Community Health Nursing..... 13
 Emergency Preparedness..... 17
 Food and Consumer Protection..... 18
 HIV/STD Prevention..... 20
 STD Clinic..... 24
 Infectious Disease Center..... 27
 Informatics..... 30
 Laboratory Services..... 32
 Lead Poisoning Prevention..... 33
 Pollution Control..... 35
 Vector Control & Environmental Services..... 37
 Vital Records..... 40

PART 3 FINANCIAL REPORT

Finance Division..... 44
 Financial Statement..... 45
 Fund Report..... 47
 H1N1 Summary.....51

Note: Figures used in this report are based on the best available information at publishing time. This annual report is also viewable at www.allencountyhealth.com.

Fort Wayne-Allen County Department of Health — 1 E. Main St., 5th floor — (260) 449-7561 — www.allencountyhealth.com

Part I Overview

A Message from the Health Commissioner...



In the last part of April, we began to hear about a new influenza virus that was causing widespread illness in Mexico. We issued our first alert to local physicians on a Friday afternoon and by Monday the world was hearing about this potential pandemic flu. The 2009 H1N1 Influenza A virus was officially declared a pandemic on June 11, 2009. Thankfully, this virus has remained a

Category One pandemic flu virus, which is the mildest form. Having said that, five people in our community died from the virus and it has claimed more than 270 children and almost 4,000 adults nationwide. For those families, this virus was a Category 5 in terms of the devastation it caused in their lives.

Unless directly involved or affected, you may not have realized all the hard work that went into ensuring this virus had as minimal an impact as possible. Emergency departments, school clinics, physician offices and pharmacies were at 200 percent capacity or more for several weeks and were still able to maintain their high standards of care. Our department was able to distribute vaccine directly to thousands of patients at our Carew clinic site and to local physician offices to vaccinate their staff and high risk patients. This was the result of good planning and lots of long days (and evenings) from our dedicated staff.

We identified new partners through this process as well. Our local television stations stepped up to the plate to provide the only live H1N1 simulcast in the state! Our churches, hospitals and local foundations partnered to provide flu kits for the indigent. And Super Shot took the burden of providing children all the other necessary vaccines, while we focused on providing the H1N1 vaccines.

I don't know what lies ahead, but I do know that our public and private healthcare systems, school systems, social service agencies, and media now have an impressive track record of working together to ensure this community can get through anything! And now, I hope you have that confidence as well.

Deb G. March

Fort Wayne-Allen County Department of Health — 1 E. Main St., 5th floor — (260) 449-7561 — www.allencountyhealth.com

A Message from the Department Administrator...



The year 2009 presented the Department with many opportunities to address important public health issues in innovative ways.

The division directors began implementing their 2009-2010 strategic plans. We discovered and addressed issues with lead poisoning observed among our Burmese population. We

sought and successfully received several grants to accommodate needed public health projects outside of the scope of the Department's overall budget. We began a comprehensive look at our overall internal enforcement capabilities with respect to the ordinances we oversee so we can begin implementing more efficient case follow-up. We implemented various projects associated with issues such as radon, food protection, vital records, pandemic preparedness, and many more. We successfully sought funding for and began construction of a new clinic that will house all of our clinical divisions early in 2010. We completed a new storage facility that was gravely needed and is in constant use.

We cannot, however, discuss the endeavors of 2009 without mentioning the impact and response to the H1N1 influenza pandemic. The vaccination, supply management, and data capturing effort with respect to this event is unprecedented and will go down in my "book" as the most significantly impactful issue thus far in my career. I am most proud of the flexibility of our staff and the "get it done" attitudes. I cannot end a discussion of the pandemic response efforts without a thank you to all of our community partnering agencies without whose support and assistance we would not have been able to accomplish all that we did.

Great job team! Great job partners! And, great job community in heeding the advice we gave! I look forward to continued success in 2010.

Midge Saldaña

Elected Officials

Board of Commissioners of Allen County

F. Nelson Peters (S)
Linda K. Bloom (P)
Bill Brown (VP)



Allen County Council

Maye L. Johnson, 1st District
Paula S. Hughes, 2nd District (VP)
Darren E. Vogt, 3rd District
Larry L. Brown, 4th District
Paul G. Moss, At-large
Robert A. Armstrong, At-large
Roy A. Buskirk, At-large (P)

Mayor of the City of Fort Wayne

The Honorable Tom Henry



Fort Wayne City Council

Tom Smith, 1st District
Karen Goldner, 2nd District
Thomas F. Didier, 3rd District
Mitch V. Harper, 4th District
Timothy M. Pape, 5th District
Glynn A. Hines, 6th District
Marty Bender, At-large
John H. Shoaff, At-large
Liz Brown, At-large

Executive Board of Health

The members of the Executive Board of Health are appointed by the Mayor of Fort Wayne (3) and by the Board of Commissioners of Allen County (4). The Board's membership was as follows:

Joseph Steensma, CIH, MPH, *President*
Term expires Dec. 31, 2010

Janet Paunwar, *Vice President*
Term expires Dec. 31, 2011

Gregory S. Schmitt, MD, FACS
Term expires Dec. 31, 2009

Terri Y. Farr, RN
Term expires Dec. 31, 2011

Mark Schomogyi, MD (Resigned)
Todd C. Rumsey, MD
Term expires Dec. 31, 2010

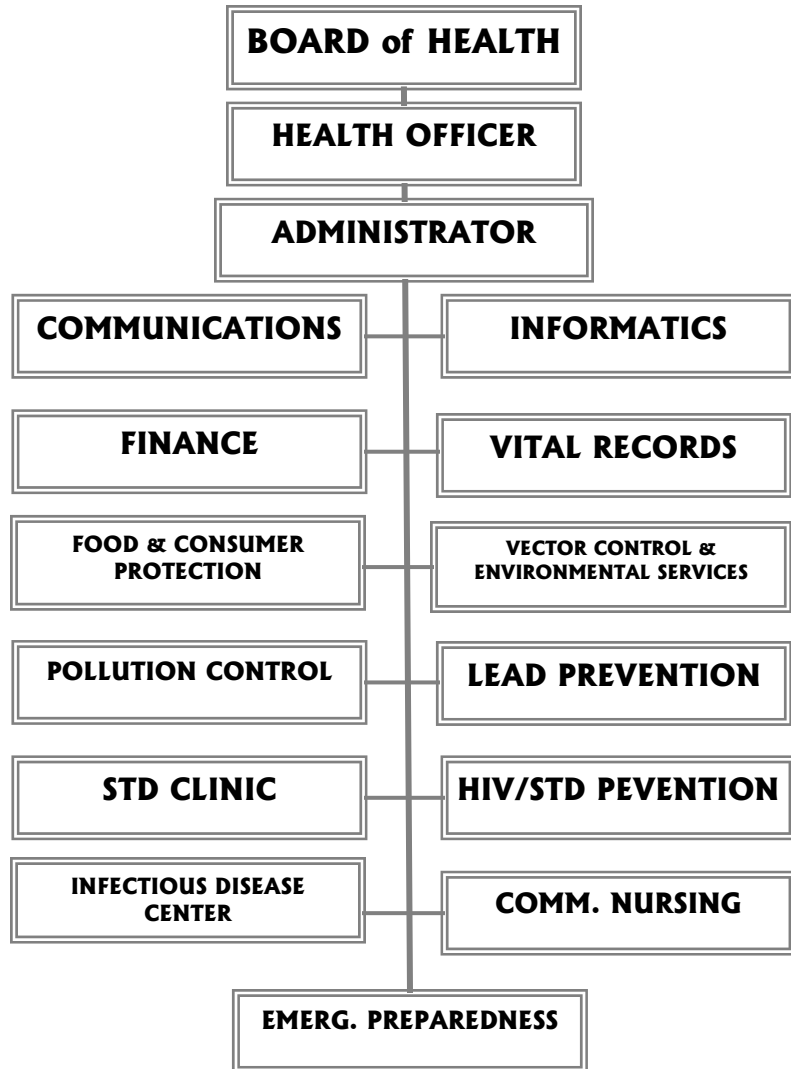
Rick Regadanz
Term expires Dec. 31, 2009

Jay Patel, MD
Term expires Dec. 31, 2012

Laura Maser, Board Attorney

Paul Moss, Allen County Council liaison

Organizational Chart



About the Department

Fort Wayne-Allen County Department of Health

Main Office

1 E. Main St., 5th Floor
Fort Wayne, IN 46802
(260) 449-7561

Infectious Disease Center

2040 S. Calhoun St
Fort Wayne, IN 46802
(260) 449-7920

Vector Control & Environmental Services

2242 Carroll Road
Fort Wayne, IN 46818
(260) 449-7459

Our Mission...

In support of Allen County and its municipalities, the Fort Wayne-Allen County Department of Health strives to promote the health, safety, and well-being of all residents. With guidance from the Indiana State Department of Health and support from our many partnering agencies, we endeavor to have a model public health infrastructure that provides professional, responsive, and cost-effective services to the community.

Results at a glance...

- 2,298 children seen in Immunization clinic
- 6,064 patient visits to the STD Clinic
- 373 refugees screened
- 14 new cases of tuberculosis reported
- 27 tattoo establishments licensed
- 1,949 food service establishments inspections conducted
- 80 children diagnosed with an elevated blood lead level
- 120 construction permits issued for septic systems
- 18 mosquito samples positive for West Nile virus
- 702 rodent complaints

Most common infectious diseases:

- Hepatitis C
- Hepatitis B, chronic
- Campylobacter
- Giardia
- Salmonella

Community Partners

The Department relies on the cooperation and resources of many other agencies and organizations in Allen County in order to fulfill its mission of providing the most effective delivery of public health services to our community. We thank them.

Government/ Social Service

Agencies

AIDS Task Force
 Allen County Clerk's Office
 Allen County Extension Office
 Allen County Suicide Prevention Council
 American Red Cross
 Associated Churches of Fort Wayne and Allen County
 Catholic Charities
 Center for Behavioral Health
 Center for Nonviolence
 Community Action of Northeast Indiana
 Community Harvest Food Bank
 Euell A. Wilson Center Community Center.
 First Steps of Allen County
 Fort Wayne African-American Cancer Alliance
 Fort Wayne Downtown Rotary Club
 Fort Wayne Housing Authority
 Fort Wayne Medical Education Program
 Fort Wayne Medical Society
 Fort Wayne Rescue Mission
 Fort Wayne Women's Bureau
 H.A.N.D.S
 Habitat for Humanity
 Health Vision Midwest
 Healthier Moms and Babies
 Lutheran Social Services of Indiana
 March of Dimes
 McMillen Center for Health Education
 Planned Parenthood of Greater Indiana
 St. Joseph Community Health Foundation

Three Rivers Ambulance Authority
 United Way of Allen County Volunteer Center
 Wayne Township Trustee
 YMCA Women's Shelter

Hospitals/Health Clinics

ASK Clinic
 Lutheran Health Network
 Matthew 25 Health and Dental Clinic
 Neighborhood Health Clinics
 Park Center
 Parkview Health
 RediMed
 Super Shot, Inc.

Schools/Universities

Anthis Career Center
 Ball State University
 East Allen County Schools
 Fort Wayne Community Schools
 Indiana-University, Purdue University, Fort Wayne
 Indiana Wesleyan
 International Business College
 Ivy Tech Community College
 Northwest Allen County Schools
 Southwest Allen County Schools
 University of Saint Francis
 West Noble High School Drama Club

State/Local Partnerships

In addition to internal operations, the Department's administrative and professional staff participate on various state and local task forces, standing meetings and committees, coordinating councils and interagency groups.

Local/Regional

Allen County Air Quality Task Force
 Allen County Amateur Radio Emergency Service (ARES)
 Allen County Asthma Coalition
 Allen County Behavioral Health Response Team
 Allen County Emergency Response Team
 Allen County Data Board
 Allen County Flu Task Force
 Allen County Human Resources Safety Committee
 Allen County Medical Reserve Corps (MRC)
 Allen County Pandemic Flu Task Force
 Allen County Partnership for Water Quality Board (ACPWQ)
 Allen County Regional Water and Sewer District board (ACRWSDB)
 Allen County School Safety Commission
 America on the Move
 Area Funeral Directors
 Community Infectious Disease Network of Allen County (CIDNAC)
 Core Refugee Services meeting
 Covering Kids Task Force
 District 3 Hospital/Health Department planning committee
 First Steps Council
 Focus on Health
 Girl Scouts of Limberlost Council
 Great Kids Make Great Communities
 Habitat for Humanity family selection committee
 Health Advisory Board (Head Start)
 Health is the Key to My Heart
 Healthcare Access Program (HAP) committee
 Healthy Cities Health Fair
 Homeless Task Force
 Interagency Council on Housing and Homeless Issues
 Kids-Safe Network
 Northeast Indiana AIDS Memorial
 Northeast Indiana AIDS Walk Steering Committee
 Northeast Indiana Environmental Health Association
 Northeast Indiana Corporate Wellness
 Public Health Disaster Response Team
 Refugee Core Services Group
 Safe Kids
 Sexual Assault Treatment Center board
 Sickle Cell Advisory Council
 Success by Six
 Suicide Prevention Council
 TB Consortium (Lutheran/Parkview)
 Watershed Team meetings
 WebChart development team
 World AIDS Day planning committee

State

Children and Hoosiers Immunization Registry Program (CHIRP) User Group
 Indiana Environmental Health Association (IEHA)
 Wastewater Management Committee
 Food Protection Committee
 Indiana Family Health Council
 Indiana Immunization Coalition
 Indiana Methamphetamine Task Force
 Indiana State Department of Health (ISDH)
 ISDH Bioterrorism Advisory Committee
 ISDH District 3 Team
 ISDH Environment and Housing subcommittee
 ISDH HIV/STD Prevention
 ISDH Mass Prophylaxis Work Group
 ISDH Risk Assessment format protocol group
 Indiana State Hepatitis Advisory Council
 Indiana Vital Records Association
 Indiana Vector Control Association
 Lead-Safe Task Force
 Maumee River Basin Partnership of Local Governments (MRBPLG)

Part II

Achievements & Highlights

Communications/Media

Programs & Services

- Media & Public Relations
- Crisis Communication
- Health Insurance Portability and Accountability (HIPAA) Compliance

Staff

John Silcox, Dir.

Hours of Operation

Mon.-Fri.
8 a.m. to 5 p.m.

Contact information

Voice: 449-7395
Fax: 427-1391

Highlights for 2009

- **Developed** a communication plan to inform the public about the H1N1 influenza virus, vaccination and containment measures that included:
 - A local television simulcast
 - Updated Pandemic Flu Preparedness Guide
 - Translation of educational materials in multiple languages
 - Three PSA ads for television to encourage vaccination
 - A PSA for movie theaters to encourage vaccination
 - A multimedia effort in Spanish to educate about flu prevention
 - A partnership with United Way 2-1-1 to create a hotline center for handling H1N1-related questions.
 - An enhanced Web site, FightTheFlu.org
 - Weekly updates via email, broadcast fax to public information officers and community partners
 - Regular news releases to the media
- **Published** 3 issues of *Inside FWACDOH*, the department's bimonthly newsletter
- **Developed** a release of information policy and media access policy for the Department
- **Identified** and trained 2 staff members to serve as backup Public Information Officers in the event of a public health emergency
- **Trained** 14 new staff members on HIPAA privacy rules
- **Participated** in Allen County Air Quality Task Force and Workplace Wellness initiatives

Goals for 2010

- **Develop** a records retention and archival policy for department
- **Update** department's Crisis & Emergency Risk Communications Plan and integrate into overall Emergency Response Plan
- **Conduct** a department-wide audit to ensure HIPAA compliance

Community Health Nursing

Programs & Services

- Free children's immunizations
- Adult Hepatitis B Clinic
- Health screenings for newly arriving refugees
- Lead screening and lead case management
- Disease prevention
- Travel vaccine information
- Recommendations for post exposure rabies prophylaxis to animal bite victims
- General health education

Staff

Marlene Crouse, Dir.
Nikki Hartman, BSN, RN
Candy Staadt, AD, RN
Tamar Brewer, MA
Patty Easterday
Patti Oelkuch

Hours of Operation

Office
 Mon.-Fri.
 8 a.m. to 5 p.m.

Immunization Clinic
 Wed. & Fri.
 8:30-11:30 a.m. &
 1-4 p.m.

Refugee Health screenings Mondays and Tuesdays

Contact information
 Voice: 449-7514
 Fax: 449-3996

Highlights for 2009

- **Improved** immunization coverage levels for 2-year-olds attending the Immunization Clinic from 89 to 91 percent.
- **Participated** in the statewide CHIRP Blue Ribbon Panel formed by ISDH.
- **Conducted** immunization clinics for adults: Rabies pre-exposure prophylaxis for Fort Wayne Animal Care and Control officers; Hepatitis B for city, county employees, Sheriff's Reserve, and INDOT employees; and City-County Flu Clinics.
- **Assisted** the Healthy Homes Program with screening 207 Burmese refugee children for lead poisoning.
- **Assessed** risk factors for lead poisoning in children who attended the Childhood Immunization Clinic 6 months through 6 years of age and referred at risk children for lead screening.
- **Co-coordinated** the Focus on Health Site for the City-County Building site in April.
- **Completed** the required NIMS training for all staff.
- **Attended** training for lead case managers.
- **Attended** other trainings as follows: Two staff nurses were trained to do Fit Testing; two staff attended I-NEDDS training; two nurses attended the PHN State Conference; all staff attended Immunizations A-Z training.
- **Assisted** with Hands Only CPR training for the community in May, July and October.
- **Participated** in state and community organization meetings: the Indiana Immunization Coalition, CHIRP User Group meetings, Refugee Core Services Groups, Asthma Coalition, Three Rivers CPR Task Force, EACS Suicide Prevention Council, Healthy Cities Health Fair Planning Committee, and Focus on Health Planning Committee.
- **Functioned** as a clinical site for IPFW, BSU, USF and IW student nurses.
- **Supervised** and provided staffing for the H1N1 Hotline in May.

Highlights cont.

- Suspended routine clinical operations from October 5 through December 31 to coordinate H1N1 vaccine distribution, accounting, and administration:
 - Functioned as the Coordinator of H1N1 vaccine to providers in Allen County from July through December.
 - Trained private providers interested in administering H1N1 vaccine and monitored vaccine usage and data entry into CHIRP registry.
 - Trained and supervised H1N1 vaccine administrators at the Carew clinic October through December.
 - Trained data enterers and entered H1N1 vaccine administration into the CHIRP registry.

Goals for 2010

- **Increase** immunization coverage levels for children through 18 years of age
- **Plan** and implement a Medicaid billing process for the division
- **Work** with school nurses in Allen County to immunize teens with Tdap, Menactra and Varicella vaccines prior to the 2010-11 school year
- **Identify** and encourage screening of children 6 months through 6 years of age at risk for lead poisoning who attend the Immunization Clinic
- **Provide** administrative and intermediate lead case management of children referred by the Healthy Homes Program
- **Work** with the Healthy Homes Program to develop a Lead Clinic for lead poisoned children and children at risk for lead poisoning
- **Provide** timely health screenings for newly arriving refugees and timely results regarding health screenings
- **Provide** reports of trends in health screening data of newly arriving refugees to community partners
- **Support** public health activities of community partners in Allen County in 2010
- **Update** CPR training for division staff

Disease Prevention – By the numbers

	<u>2008</u>	<u>2009</u>
<u>Childhood Immunizations</u>		
DOH		
Children seen (# visits)	2,818	2,298
Doses Given	11,205	8,127
Immunization Coverage Levels	89%	91%
<u>Adult Immunizations</u>		
Healthy Cities Health Fair		
Flu Vaccine	469	*
Pneumococcal Vaccine	192	*
Tetanus Vaccine	171	*
Flu Clinics		
Seasonal Flu Clinic (City/County employees)	282	400
H1N1 Flu Clinic (City/County employees)	n/a	288
H1N1 vaccine doses administered in Allen County	n/a	42,950
Hepatitis B-Doses Given		
**City/County Employees	79	19
**INDOT	50	16
Hepatitis B (local purchase)	47	62
Other Adult Vaccines		
Tdap	311	290
Tetanus	59	13
Meningitis	30	25
***MMR	135	94
HIB	9	5
***Varicella	52	52
IPV	32	9
Adolescent Hepatitis B	29	136
Adult Hepatitis A	101	109
Adolescent Hepatitis A	6	2
Adult Hepatitis A/B	41	234
Influenza	79	192
Rabies Immunizations to Animal Care & Control	12	18

*The CHN division did not participate in Healthy Cities due to H1N1 clinics.

**These people received grant funded Hepatitis A/B in 2009.

***Any student >18 years of age is able to receive Meningitis, Hepatitis B, Varicella and MMR vaccines under VFC guidelines.

Disease Prevention—By the numbers (cont'd)

	<u>2008</u>	<u>2009</u>
Refugee Program		
Refugees Screened	863	379
Hepatitis B & C blood draws	633	316
RPR	631	274
HIV	633	289
Stool	14	126
TB Screen	862	371
Lead Screen	417	169
# Immunized	511	243
****Sickle Cell	863	211
Countries of origin: Myanmar		
	<u>2008</u>	<u>2009</u>
Newborn Screens	n/a	5
Animal Bite Reports	900	905
Public Health Nurse follow-up	86	54
Lead Screens (CHN Division Non-Refugee)	10	<10
Lead Screens (CHN Division Refugee Re-screens)	84	13
Lead Case Management		
*CHN Division assisted the Lead Safe/Healthy Homes Division		
See Lead Division Report for 2009		
****The Sickle Cell grant ended June 1, 2009. We are no longer screening for Sickle Cell Anemia.		
N/A = not available		

Emergency Preparedness

Programs & Services

- Emergency planning and readiness
- Response to local public health emergencies
- Emergency response equipment and supply management
- Training & drills

Staff

Brad Witte, Dir
Matt Brokaw, CERT/MRC
Corrie Hixson, SNS

Hours of Operation

Mon.-Fri.
 8 a.m. to 5 p.m.

Contact info

Voice: 449-7151
 Fax: 427-1391

Highlights for 2009

- **Passed** the ISDH Local Technical Assistance Review (LTAR) which is a mandatory review of our preparedness status. Our score from 2008 was in the mid 50 percent range and for 2009 was 88 percent
- **Met** the ISDH requirements for the 2009 grant period, which included preparedness training, drills, and exercises
- **Purchased** preparedness supplies and equipment with available grants to equip our Department for public health responses
- **Moved** the bulk of preparedness supplies and equipment into the new storage site
- **Coordinated** the distribution of vaccine for the 2009 H1N1 pandemic response

Summary

This year saw a substantial build-up of emergency preparedness and response supplies and equipment. This along with the training and planning done this year puts our Department in a much better position to respond to public health emergencies in our community.

Goals for 2010

- **Complete** H1N1 pandemic response activities
- **Complete** the relocation of preparedness and response supplies and equipment
- **Institute** the new inventory control software and get all supplies and equipment tagged and entered
- **Improve** our LTAR scores
- **Complete** the update to the Department's Emergency Response Plan

Food & Consumer Protection

Programs & Services

- Food establishment inspections
- Facility plan reviews and related inspections
- Food-borne illness investigations
- Hotel/Motel complaint investigations
- Licensing and inspection of tattoo/body piercing establishments

Staff

Dawn McDevitt, Dir.
Steve Schumm, Asst. Dir.
Ann Applegate
Holly Sanderson
Susan Depp
Amanda Havens
Olivia Martin
Ruby Bates

Hours of Operation

Mon.-Fri.
 8 a.m. to 5 p.m.

Contact information

Voice: 449-7562
 Fax: 427-3010

Highlights for 2009

- **Conducted** monthly in-house educational training sessions for staff in enforcing food safety
- **Presented** ServeSafe Food Protection Manager Certification Course to approximately 90 key food protection personnel from area food establishments
- **Presented** open workshops to food establishment personnel on proper handwashing and glove use as well as temporary food service requirements and unsafe practices
- **Trained** all staff in the enforcement of tattoo and body piercing regulations and conducted inspections for a tattoo and body piercing convention
- **Sent** five staff members to Bedbugs and Cockroaches training in connection with ISDH Epidemiology, St. Joseph Health Foundation, ISDH Asthma Program representative and Parkview Hospital Advantage Health Solution
- **Represented** Northeast Indiana as a voting member of the IEHA Food Protection Committee. Also, a member of a committee working to develop a model food ordinance and model enforcement guidance document.
- **Served** on the Board for Anthis Career Center Culinary Arts Program
- **Worked** in cooperation with several farmers' markets to provide information regarding recent home-based vendors legislation
- **Provided** educational training and presentations to various food handlers, schools, and service organizations on safe food handling practices

Goals for 2010

- **Reduce** the likelihood of transmission of food borne illness pathogens
- **Continue** staff development through educational opportunities
- **Prevent** the spread of blood-borne pathogens and Methicillin-resistant *Staphylococcus aureus* (MRSA) in tattoo and body-piercing facilities

Goals cont.

- **Ensure** smoke-free environment for all public places, designated outdoor venues, and places of employment in Allen County in accordance with the Allen County Smoking Ordinance
- **Ensure** sanitary conditions of hotels and motels and the prevention of the spread of health hazards and concerns

Consumer Protection –By the Numbers

Food Licenses Issued

	<u>2008</u>	<u>2009</u>
Food Service Establishments	1,178	1,190
Food Market Establishments	428	443
Mobile Food Units	97	82
Temporary Food Establishments	770	948
Vending	12	11

Food Inspection Activity

	<u>2008</u>	<u>2009</u>
Food Service/Mobile Food Service Estab.	2,188	1,949
Food Market/Mobile Food Market Estab.	660	532
Temporary Food Establishments	1,067	1,214
Follow-ups/Recalls	479	495
Consumer Food Complaints	503	482
Preliminary Inspections	360	331
Opening Inspections	228	236
Plan Reviews Conducted	103	92
Investigations <i>(fire, reportable diseases, operating without a permit)</i>	595	418
Railroad camp cars	n/a	2

Tattoo/Body Piercing

	<u>2008</u>	<u>2009</u>
Establishments Licensed	37	27
Mobile Licensed	2	4
Artists Licensed	123	123
Guest Artist Licensed	1	54
Inspections and Re-Inspections	81	189
Complaint Investigations	18	28

Motel/Hotel Inspections

	<u>2008</u>	<u>2009</u>
Complaints	25	16
Re-inspections	21	5

HIV & STD Prevention

Programs & Services

- HIV/STD prevention and education
- Disease surveillance through screening and contact tracing
- Case-follow-up

Staff

Kathy Thomson, Dir.
Rochelle Feldheiser
Dwight James
Pamela Sully
Hilda Hill
Julie Ensley

Hours of Operation

Mon.-Fri.
 8 a.m. to 5 p.m.

Satellite Clinic

Schedule available on Website or call 449-3021 for details of locations and hours

Contact information

Voice: 449-3021
 Fax: 449-3507

Highlights for 2009

- **3,460 STDs reported** in 2009 in District III (gonorrhea, chlamydia, syphilis, and HIV). STDs represent the largest percentile of all reportable communicable diseases.
- **Climbing** rates of chlamydia continued this year. In Allen County, chlamydia rates jumped 7 percent. Chlamydia remains the most common bacterial STD reported in Allen County teenagers. The 15-24 year old population saw the greatest increase in chlamydia cases.
- **Declining** gonorrhea rates were noted in 2009. The number of cases decreased by 17 percent when compared to the number of cases in 2008 but still remained higher than the total number of cases in 2007. 2008 was a year with an exceptionally large jump in the number of gonorrhea cases (34 percent increase). HIV and early syphilis cases also saw slight decreases in 2009.
- **Teenagers** made up 15 percent of the newly diagnosed HIV cases this year. Last year only 3 percent of the newly diagnosed cases of HIV were under age 25. This year 35 percent of the cases were individuals under the age of 25.
- **Screening** efforts identified 50 percent of the newly diagnosed HIV cases in 2009. The other 50 percent were identified by private physicians and hospitals. HIV counseling sessions totaled 2,549. 131 syphilis reactors were followed up with 12 cases identified and treated. Four were primary and secondary cases, one early latent and seven late latent cases.
- **Designed** and implemented eight week “Sense of Self” youth program with community partners. The goal of this project was to empower and equip African-American female youth to develop and strengthen their inner sense of self to better make life choices that affect their health and well being.

Highlights cont.

- **Promoted** HIV prevention awareness through community projects including National Day of testing, AIDS Walk, Homeless Health Fair and World AIDS Day. The 2009 World AIDS Day prevention education event was a collaborative project with high school drama students and the downtown career center, reaching more than 1,000 youth.
- **Received** notice of severe cut to HIV Prevention grant for 2010 funding, resulting in the loss of staff and services during the later part of 2009.
- **Implemented** changes to accommodate stricter testing criteria and types of available laboratory testing due to reduced funding.
- **Moved** forward with plans to merge all three Department clinics into one building by Spring 2010.
- **Identified** through surveillance efforts that more than 70 percent of the total Allen County STD cases reported in 2009 resided in the following zip code areas: 46806 (23%), 46816 (11%), 46803 (10%), 46805 (6%), 46802, 46807, 46808, and 46825 (each with 5%).
- **Compiled** a Top Ten Self-Identified Risks for clients getting HIV Test:
 1. Sex with a person with unknown HIV Status
 2. Sex without using a condom
 3. Sex while on drugs
 4. Oral sex
 5. STD
 6. Sex with an anonymous partner
 7. Sex with known MSM (men having sex with men)
 8. Sex while using cocaine, crack
 9. Sex with someone met from the Internet
 10. Sex while using Ecstasy

Goals for 2010

- **Implement** the use of the Statewide Information Management and Surveillance System (SWIMSS)
- **Provide** timely HIV/STD surveillance for District III
- **Provide** timely interviews and contact investigations to reduce the transmission of HIV/STD
- **Enhance** the training and development of the existing workforce
- **Research** and design a feasible fee structure for HIV/STD clients to help off set funding reductions

Surveillance for ALLEN COUNTY: 2009 Total Cases and Rates

DISEASE	2008	2009	% Change
Chlamydia	1,872	1,997	+6.6%
Rate/ 100,000 pop.	539.0	575.0	
Gonorrhea	930	773	-16.9%
Rate/ 100,000 pop.	267.8	222.6	
HIV	22	19	-13.6%
Rate/ 100,000 pop.	6.3	5.5	
Syphilis	4	2	-50%
Rate/ 100,000 pop.	1.2	.58	

2008 and 2009 rates based on July 1, 2006 estimated Allen County census, population 347,316

**Surveillance for DISTRICT 03: Northeast Indiana*
2009 Age Distribution by Disease**

AGE	CHLAMYDIA		GONORRHEA		HIV		P&S	SYPH
	2008	2009	2008	2009	2008	2009	2008	2009
0 -14	20	23	6	7	0	0	0	0
15-19	796	898	249	222	0	4	2	0
20-24	903	990	390	283	1	5	3	2
25-29	362	354	172	154	6	1	0	2
30-34	130	149	92	84	3	4	0	0
35-39	68	72	49	46	7	5	0	0
40-44	29	24	23	23	6	2	2	0
45 +	21	21	17	18	7	5	0	0
UNK	7	6	0	2	0	0	0	0
2008 TOT.	2,336		998		30		7	0
2009 TOT.	2,537		839		26		4	
% Change 2008-2009	+8.6%		-16%		- 13%		-43%	

*District 03 is the HIV/STD Prevention Programs' surveillance jurisdiction and is comprised of the following counties: Lagrange, Steuben, DeKalb, Noble, Kosciusko, Whitley, Allen, Wabash, Huntington, Wells, Adams and Jay.

STD Clinic

Programs & Services

- Testing and treatment for sexually transmitted diseases
- Contact tracing/screening/case follow-up to prevent spread of disease

Staff

Julie Reece, Dir.
Deb Trabel, RN, MSEd
Laura Bartlett, RN (p/t)
Michelle Eck, RN (p/t)
Lisa Little, LPN (p/t)
Jennifer Myers, CMA
Felicia Nino

Hours of Operation

Mon.-Fri.
 8 a.m. to 11:30 a.m.
 12:45 to 5 p.m.

Contact information

Voice: 449-7504
 Fax: 449-3507

Highlights for 2009

- **Met** strategic plan goal to provide a minimum of 3,000 gonorrhea tests, 3,000 Chlamydia tests, 2,000 syphilis tests, and 2,000 HIV tests
- **Referred** clients who were positive for these infections to Disease Intervention Specialists for contact investigations
- **Assisted** in planning and delivering a Community Outreach Prevention program at the Euell Wilson Youth Center targeting 10-12 year old females
- **Assisted** with HIV testing at the Healthy Cities Health Fair
- **Surveyed** clinic clients for satisfaction of services. Clinic clients were overwhelmingly positive about their clinic visit, with at least 95 percent satisfaction.
- **Participated** in 4 STD/HIV Cincinnati Training Center training sessions via Internet which met a strategic goal
- **Implemented** CLIA waived testing to offset the effects of the closing of the STD lab mid-year due to budget cuts in the Department
- **Instituted** more stringent testing guidelines for HIV, syphilis, Hepatitis B, and Hepatitis C due to funding cuts and ISDH lab requirements
- **Provided** clinical instructional experiences for nursing and medical assisting students from Indiana University- Purdue University Fort Wayne, University of Saint Francis, Indiana Wesleyan University, and International Business College

Goals for 2010

- **Work** with IT to increase capacity of the electronic medical record to generate reports that will be useful for the functioning of the STD Clinic and STD/HIV Prevention divisions
- **Move** to the Allen County Medical Annex Building and adapt current policies and procedures to optimize the use of space and staff in the new facility

Goals (cont.)

- **Continue** to provide testing and treatment for sexually transmitted infections in a respectful and confidential manner
- **Continue** working with community partners in reaching out to youth with a prevention message
- **Review** the new 2010 CDC Guidelines for sexually transmitted infections and update the STD Clinic protocol as needed
- **Conduct** a client satisfaction survey before and after the move to the new Medical Annex Building. This will help us evaluate our services after the move so we may consider changes based on client input.
- **Participate** in a minimum of 3 Cincinnati STD Training Center E-learning sessions and other trainings as they are available

Testing for STDs – By the numbers

	<u>2008</u>	<u>2009</u>
Total Clinic Visits	6,370	6,064
Unaccommodated calls	N/A	2,519
Female	43%	43%
Male	57%	57%
<u>Age Group</u>		
13-14	0.22%	0.38%
15 - 19	15%	15%
20 - 24	28%	31%
25 - 29	20%	19%
30 - 34	11%	11%
35 - 44	16%	14%
>44	10%	10%
<u>Race</u>		
White	51%	51%
Black	41%	42%
Other	7%	7%
Chlamydia		
Total Tests	3,591	3,478
Total Positive	624	596
Positivity Rate	17%	17%
Gonorrhea		
Total Tests	3,591	3,478
Total Positive	359	259
Positivity Rate	10%	7%

Testing for STD's – By the numbers (cont'd)

	<u>2008</u>	<u>2009</u>
Syphilis		
Total Tests	2,998	2,407
Primary Syphilis	3	0
Secondary Syphilis	3	2
Early Latent Syphilis	0	0
Late Latent Syphilis	6	6
Total Cases	12	8
Positivity Rate	0.40%	0.33%
Trichomoniasis	404	357
Bacterial Vaginosis	612	599
Genital Wart Treatment		
Cryotherapy	375	428
TCA	559	629
Total Warts Treatments	934	1,058
Herpes Simplex Virus		
Total Tests	131	107
Total Positive	60	52
Hepatitis B		
Total Tests	319	143
Total Positive	7	11
Hepatitis C		
Total Tests	416	298
Total Positive	17	19
Hepatitis B Vaccine Given		
First Vaccine	332	247
Second Vaccine	240	210
Third Vaccine	189	133
Fourth Vaccine	8	27
Total Hep B Vaccine Given	769	617
HIV		
Total Tests	2,910	2,367
Total Positive	9	12

Infectious Disease Center

Programs & Services

- Monitor, prevent, treat and educate the community on all reportable communicable diseases
- Treatment for active and latent tuberculosis
- Contact investigations for active tuberculosis and other reportable communicable diseases
- Site investigations for all unusual occurrence of disease

Staff

Scott Rosheck, Dir.
Jessica James, RN
Dawn Sipes, RN
Hannah Opliger, RN
Lisa Little, LPN (p/t)
Tamar Brewer, MA
Laura Sanchez
Phil Steigerwald
Tin Moe Tun
Audrey Lapsley
Laquisha Stapleton

Hours of Operation
 Mon.-Fri.
 8 a.m. to 5 p.m.

Contact information
 Voice: 449-8984
 Fax: 449-3813

Highlights for 2009

- **Collaborated** with other Department divisions to provide screening and treatment for 379 Burmese refugees
- **Partnered** with other Department divisions to provide H1N1 vaccine at the Carew Clinic site. Also, the IDC worked with other divisions of the Department to provide H1N1 and seasonal flu vaccine to a number of secondary sites. Without these sites, those populations would not have received the vaccine.
- **Partnered** with the ISDH to utilize the Indiana National Electronic Disease Surveillance System (INEDSS) to complete all reportable disease reports required by 410 IAC 1-2.3-48

Goals for 2010

- **Continue** to identify, effectively treat, and cure patients with active pulmonary tuberculosis
- **Continue** to identify contacts to active cases of tuberculosis, and provide evaluation and treatment to those with latent tuberculosis infection
- **Screen** high-risk populations for TB and ensure that infected individuals are quickly treated to prevent development of active TB disease
- **Provide** timely and thorough case investigation and reporting of mandatory reportable communicable diseases
- **Assess** communicable disease occurrences for local trends and implement strategies to decrease disease transmission.
- **Assist** with Department-wide plans for emergency preparedness as it relates to communicable diseases and mass contact investigations
- **Collaborate** with all available community partners to screen and medically manage the projected 350 Burmese refugees that will likely come to Allen County

Infectious Disease – By the numbers

	<u>2008</u>	<u>2009</u>
Cases of Tuberculosis		
New Cases of Tuberculosis Reported	16	14
Cases of Tuberculosis Transferred from Another Jurisdiction	0	0
TOTAL served	16	14
Physician Visits	1,958	1,766
Contacts Evaluated	115	155
Tuberculin Skin Testing		
Contacts	234	195
Source/Associate Investigation	1	1
Refugees	862	379
Targeted Skin Testing	19	456
Community Referrals for individuals with symptoms or high-risk medical conditions	64	61
Routine Community Skin Testing	0	0
TOTAL	1,180	1,092
Satellite Laboratory Services		
Clients Visits	635	883
Specimens Collected	715	2,012
Directly Observed Therapy Visits		
In Clinic	939	529
In Field	5,405	5,654
TOTAL	6,344	6,183
Outbreak Investigations	1	1

Infectious Disease – By the numbers

	2008	2009
Brucellosis	n/a	1
Campylobacter	31	39
Cryptosporidium	20	21
Dengue	n/a	0
E Coli, 0157(+other)	2	4
Encephalitis, West Nile	0	0
Encephalitis, La Crosse	0	0
Gardia	n/a	38
Haemophilus Influenza	n/a	8
Haemophilus B	0	0
Hepatitis A	2	6
Hepatitis B, Chronic	72	92
Hepatitis B, Acute	1	0
Hepatitis B, (Window)	N/A	2
Hepatitis C	316	332
Hepatitis D	N/A	1
Histoplasmosis	6	8
Influenza Death	4	5
Legionellosis	2	5
Listeriosis	1	1
Lyme Disease	8	17
Malaria	1	3
Measles	0	2
Meningitis, Bacterial (invasive)	3	2
MRSA	3	3
Mumps	13	4
Pertussis	9	8
Q-Fever	0	0
Rocky Mountain Spotted Fever	0	1
Rubella	0	0
Salmonella	23	38
Shigella	11	2
Strep Invasive Group A	7	11
Strep Group B Invasive	13	16
Inv Strep Pneumococcal	4	13
Inv Strep Pneumococcal (Non-resistant)	40	31
Toxic S. Syndrome	0	0
Varicella	0	4
Yersinosis	0	0
Total	592	758

N/A = not available because the data was not tracked due to reporting rules

Fort Wayne-Allen County Department of Health — 1 E. Main St., 5th floor — (260) 449-7561 — www.allencountyhealth.com

Informatics

Programs & Services

- Develop and maintain surveillance and information systems
- Internal IT support for department
- Maintain departmental Web site
- HIPAA Security Officer

Staff

Jana Sanders, Dir.
Cindy Wable (p/t)

Hours of Operation

Mon.-Fri.
8 a.m. to 5 p.m.

Contact information

Voice: 449-7120
Fax: 449-3010

Highlights for 2009

- **Participated** in planning for the co-location of all clinical operations performed by the Department
- **Participated** in the H1N1 public clinics held October through December, 2009
- **Continued to** map septic systems with Global Positioning System (GPS) and Geographical Information System (GIS) technology
- **Implemented** new Department Website, www.allencountyhealth.com
- **Developed** and implemented Consolidated Enforcement Platform which combines all environmental services databases into one Web-based platform
- **Implemented** Time and Attendance program used by employees
- **Purchased** equipment for the Department

Goals for 2010

- **Continue** to develop the Consolidated Enforcement Platform
- **Consolidate** clinic locations and ensure a smooth transition as it relates to computer equipment
- **Continually** update Department's electronic medical record to meet ever changing demands at clinics, focusing on point and click exams
- **Create** an internal Web-based viewing GIS map for Food and Consumer Protection Division
- **Ensure** a competent and technical Department workforce by conducting staff development
- **Provide** a technologically-based infrastructure which allows divisions to maintain and produce timely and secure data

Accessing the Web – By the numbers

<u>Pages</u>	<u>Allencountyhealth.com</u>	<u>Visits</u>
http://www.allencountyhealth.com/		56,880
http://www.allencountyhealth.com/images.xml		33,764
http://www.allencountyhealth.com/divisions/vital records		10,745
http://www.allencountyhealth.com/content/news_releases.html		10,587
http://www.allencountyhealth.com/content/food_recalls.html		6,207
http://www.allencountyhealth.com/divisions/vital records		6,005
http://www.allencountyhealth.com/news/calendar.html		5,674
http://www.allencountyhealth.com/divisions/chn		5,420
http://www.allencountyhealth.com/divisions/stdclinic/		4,559
http://www.allencountyhealth.com/careers/content/current_job_openings.html		4,264
http://www.allencountyhealth.com/divisions/vector		4,179
http://www.allencountyhealth.com/divisions/disease		4,176
http://www.allencountyhealth.com/divisions/food		4,118
http://www.allencountyhealth.com/search.html		3,934
http://www.allencountyhealth.com/divisions/food		3,667
http://www.allencountyhealth.com/divisions/disease		3,476
http://www.allencountyhealth.com/alerts/content/health_alerts.html		3,461
http://www.allencountyhealth.com/about_us1226416044.html		3,338
http://www.allencountyhealth.com/about_us1226416122.html		3,171
http://www.allencountyhealth.com/divisions/vector		3,116

<u>Month</u>	<u>Page Views*</u>	
	<u>2008</u>	<u>2009</u>
January	22,446	8,095
February	22,622	28,484
March	23,929	33,113
April	25,827	36,034
May	27,526	31,641
June	27,811	34,230
July	29,642	34,701
August	28,423	33,428
September	33,733	39,333
October	32,166	68,979
November	29,000	40,474
December	28,053	36,575
TOTAL	326,178	425,087

*A Page View is a "hit" counter that only counts the HTML pages, not the graphics. So each request of a page generates an increase of one.

Laboratory Services

Programs & Services

- Water sampling testing
- Cultural and serological analysis
- E. Coli determinations/dye packet results for Pollution Control division

Staff

*Carolyn Chandler
Kathy Doseck*

Hours of Operation

Mon.-Fri.
8 a.m. to 5 p.m.

Contact information

Voice: 449-7359
Fax: 427-1391

Laboratory Analysis— By the numbers

	<u>2008</u>	<u>2009</u>
CLINICAL ANALYSIS		
GONORRHEA	4,740	981
SYPHILIS	4,427	1,759
HIV ORA QUICK	690	82
WATER ANALYSES		
POTABLE	199	0
NON-POTABLE	938	1,093
POOLS	67	0

Due to continued funding decreases, the Laboratory closed in 2009 and its services were phased out or outsourced. The above numbers represent tests completed "in-house" during the time when the Laboratory was in operation in 2009.

Lead Poisoning Prevention

Programs & Services

- Lead case management
- Risk assessments
- Samplings/inspections
- Education/prevention

Staff

Amy Hesting, Dir.
Nicole Gaunt
Loaine Hagerty
Cindy Wable
Joshua Blauvelt (p/t)
Janet Mitchell (p/t)
Amy Shepherd (p/t)
Aye Ma (p/t)
Evangelina Herrera (p/t)
Barb Owen

The Community Health Nursing Division provides Intermediate & Administrative Case Management.

Hours of Operation
 Mon.-Fri.
 8 a.m. to 5 p.m.

Contact information
 Voice: 449-8600
 Fax: 427-1391

The work of ACHHP was accomplished through ongoing monetary support from the following partners: St. Joseph Community Health Foundation, the City of Fort Wayne, Parkview Hospital Community Health Improvement Program and the U.S. Centers for Disease Control and Prevention.

The Allen County Lead Poisoning Prevention Program (CLPP) is a collaboration between the Fort Wayne-Allen County Department of Health and the St. Joseph Community Health Foundation.

Highlights for 2009

- **Worked** with the CDC, ISDH and local Burmese volunteers to conduct a large-scale blood lead testing study among the Burmese children in an area of southeast Fort Wayne
- **Received** a Lead-Safe Indiana Award in partnership with the St. Joseph Community Health Foundation and local Burmese volunteers for our work on the Burmese Project
- **Implemented** the Allen County Healthy Homes Assessment Tool
- **Assisted** the City of Fort Wayne with the successful implementation of the HUD Lead Hazard Control grant

Goals for 2010

- **Reduce** lead hazards in homes in Allen County through timely lead case management services, lead risk assessments and lead hazard remediation
- **Increase** the number of Healthy Homes in Allen County through the increased awareness of the Allen County Healthy Homes Program and remediation of health problems in the home
- **Increase** the identification of asthma cases and triggers in homes in Allen County through screening and referrals for asthma services
- **Link** families with lead poisoned children to appropriate agencies and programs to assist in mitigating the effects of lead poisoning
- **Identify** and implement a developmental assessment tool to identify areas of delay in refugee children
- **Conduct** a three-pronged research study focusing on the effectiveness of academic intervention, speech intervention and a traditional developmental assessment tool for Burmese refugee children who have been impacted by lead exposure

Highlights cont.

- **Increase** staff knowledge of lead and healthy homes issues
- **Identify** non-traditional sources of lead poisoning in the refugee community

Lead Program – By the numbers

	<u>2008</u>	<u>2009</u>
Number of children receiving case management services as of 12/31/09*		
Initial Phase	4	17
Intensive Phase	187	144
Intermediate Phase	26	19
Administrative Phase	4	14
Number of children diagnosed with Elevated Blood Lead Level as of 12/31/09		
	119	80
* Community Health Nursing staff provides Intermediate and Administrative Case Management. Each child's case may have been case managed in different phases by different case managers and community health nurses throughout the year.		
Case management work		
Number of case management activities	2,576	2,271
Developmental assessments	29	30
Family assistance (hours)	406	502
Environmental lead work		
Lead risk assessments, inspections re-inspections & samplings	140	131
Screening work		
Total Screening	6,001	4,936
Routine Screening (immunization clinic & doctors)	4,684	4,403
Targeted screening	1,317	533
General lead work		
Lead education & outreach activities	32	82

Pollution Control

Programs & Services

- Inspecting and mapping septic systems
- Investigating sewage complaints
- Swimming pools/spa inspections

Staff

Gary Chapple, Dir.
 Mark Herber, Asst. Dir.
 Kathy Doseck
 Jack Gensic
 Mike Jones
 Josh Blauvelt
 John McCue
 Amanda Woenker
 Jeni Gregory

Hours of Operation

Mon.-Fri.
 8 a.m. to 5 p.m.

Contact information

Voice: 449-7530
 Fax: 449-3010

Highlights for 2009

- **Reduced** the number of systems not on record with the Department.
- **Increased** the number of existing homes connected to public sewer
- **Reduced** closures of pools due to compliance issues

Goals for 2010

- **Complete** an inventory of all properties without valid onsite permit
- **Overhaul** the enforcement process to shorten timelines for compliance
- **Establish** assistance program to improve compliance

Pollution Control – By the numbers

	<u>2008</u>	<u>2009</u>
Construction Permits Issued	121	120
Inspection/New Installs/Initial	192	170
Inspection/New Installs/Re-inspection	376	348
Inspections/Existing Systems	522	428
Operation Permits	215	211
Sewage Complaints/Inspections	117	173
Sewage Complaints/Re-inspection	157	202
Dye Tests	51	62
Orders to Correct Faulty Systems	15	81
Miscellaneous Complaints/Investigations	147	83
Phase I Investigations	128	85
Public Sewer Connections	296	170
Burning Investigations	1	0
Pool / Spa – Test Stripping	3,542	4,188
Pool / Spa – Inspection	327	333
Pool / Spa – Re-inspection	124	91
Pool / Spa – Complaint	9	8
Pool / Spa – Water Samples	68	0
Lab Samples	821	773
Site Assessments	137	108
Soil Wetness Tests/Initial Test	91	110
Soil Wetness Tests/Retest	105	63
Totals	7,562	7,807

Vector Control & Environmental Services

Programs & Services

- Control of rodent populations through education, sanitation code enforcement, and poison bait placement
- Surveillance for and control of diseases spread by mosquitoes through integrated pest management measures, public education, trapping, mosquitofish placement, larviciding and adulticiding
- Investigation of complaints involving unsanitary living conditions, cockroaches, noxious odors, mold and discarded refrigerators
- Assist in the investigation of animal bites to humans to prevent illness

Staff

Dave Fiess, Dir.
Tom McCue
Francis Koch
Pat DeHaven

Hours of Operation

Mon.-Fri.
8 a.m. to 5 p.m.

Contact information

Voice: 449-7459
Fax: 449-7460

Highlights for 2009

- **Reduced** the number of mosquito breeding sites on the division's permanent breeding site list, due to historical inactivity at the sites, which allowed for increased larval surveillance and control at active sites
- **Investigated** public complaints in a timely manner, despite involvement in Department's H1N1 flu response
- **Began** a radon awareness program and provided about 900 free radon test kits to the public

Goals for 2010

- **Reduce** the number of adult mosquito samples positive for an arboviral disease
- **Create** a video on proper food safety and general sanitation for refugee populations in collaboration with other environmental health divisions
- **Reduce** environmental hazards in homes
- **Utilize** the Allen County Consolidated Enforcement Platform system for division activities

Vector Control – By the numbers

Rodent Data	2008	2009
Initial Complaints	702	595
Initial Surveys	640	559
Bait Used (pkgs.)	1,795	1,205
Door Hangars	75	59
Recall Inspections	1,054	509
Recall Surveys	1,030	498
Bait Used (pkgs.)	1,915	868
Door Hangars	65	65
Alley Surveys	3,267	1,207
Bait Used (pkgs.)	3,271	319
Conditions Referred for Code Violations	155	237
Legal Notifications	93	294
Fines	1	3
Court Summons	0	0

Mosquito Data

Citizen Complaints	339	435
Breeding Site Inspections	4,201	5,915
Breeding Sites Treated	807	1,034
Larval Specimens Collected	731	917
Mosquitofish Sites	78	156
Dead Birds Reported	222	126
ULV Fogging (miles)	310	355
Mosquito Samples Tested	467	583
WNV-Positive Samples	19	18

Rabies Data

Animal Bite Investigations	116	68
Animal Samples Driven to ISDH	8	8

Environmental Services

Mold—Initial Inspections	47	36
Mold — Recall Inspections	31	2
Legal Notifications	1	0
Cockroaches — Initial Inspections	67	25
Cockroaches — Recall Inspections	107	8
Legal Notification	2	0
Tires -- Initial Inspections	55	241
Tires — Recall Inspections	51	246
Legal Notifications	56	189

Vector Control – By the numbers

Environmental Services Cont.	<u>2008</u>	<u>2009</u>
Trash & Debris — Initial Inspections	40	204
Trash & Debris — Recall Inspections	45	149
Legal Notificaiton	12	73
Unsanitary Conditions — Initial Inspections	53	49
Unsanitary Conditions — Recall Inspections	74	56
Legal Notificaitons	1	2
Un-maintained Pool Inspection—Initial	106	58
Un-maintained Pool Inspection—Recall	288	23
Legal Notifications	128	7
Methamphetamine Lab Occurrence Reports	13	10
Methamphetamine Lab Abatement Order	5	5
Refrigerator/Freezer w/doors — Initial	26	53
Refrigerator/Freezer w/doors — Recall	26	43
Legal Notifications	15	44
Noxious Odors — Initial Inspections	30	19
Noxious Odors — Recall Inspections	26	14
Legal Notifications	0	1
Small Spills — Initial Inspections	4	5
Small Spills — Recall Inspections	2	1
Legal Notifications	0	0
Bed Bugs — Initial Inspections	5	18
Bed Bugs — Recall Inspections	7	10
Legal Notifications	1	0
Fleas — Initial Inspections	0	3
Fleas — Recall Inspections	0	0
Legal Notifications	0	0
Dead Animals — Initial Inspections	3	2
Dead Animals — Recall Inspections	0	1
Legal Notifications	0	0
Initial Environmental Inspections	459	723
Railroad camp car inspections	0	1

Vital Records

Programs & Services

- Filing birth/death records
- Issuing certified birth/death certificates
- Preparing/filing Paternity affidavits
- Receipt of adoption records
- Birth record changes by court order
- Verifying birth/death information for government entities and social service agencies

Staff

Janet Westendorf, Dir.
Sarah Castillo, Asst. Dir.
Kristi Gephart
Jennifer Pranger
Shannon Ramos

Hours of Operation

Mon.-Fri.
 8 a.m. to 4:30 p.m.

Contact information

Voice: 449-7147
 Fax: 449-3015

Highlights for 2009

- **Began** Local Public Health Workforce Development Mini Collaborative to discuss and improve birth and death record reporting methods. The effort is sponsored by the National Network of Public Health Institutes and the Robert Wood Johnson Foundation.
- **Monitored** death records from April until December for causes of death associated with H1N1 virus
- **Honored.** Sarah Castillo, Assistant Director, received 2009 Sally Misenheimer Award by our professional organization, Indiana Vital Records Association. This is a coveted award given to a member who has exhibited outstanding leadership and service to the organization.

Goals for 2010

- **Assist** ISDH in training all funeral directors, physicians, and local health departments in the Electronic Death Program to be implemented by statute in January of 2011
- **Attempt** to stay current with procedures and policies of Bureau of Motor Vehicles to assist citizens in procuring their Secure ID
- **Continue** to communicate with our partners in hospitals to obtain the most current and accurate medical information contained on the Certificate of Live Birth

Vital Records – By the numbers

BIRTHS		
<u>Hospital and Home Delivery</u>		
	<u>2008</u>	<u>2009</u>
Parkview Main Hospital	715	598
Parkview North Hospital	1,744	2,000
St. Joseph Hospital	575	590
Lutheran Hospital	1,627	1,396
Dupont Hospital	2,301	2,293
Home Births	39	49
En route to hospital	0	0
TOTAL BIRTHS	7,001	6,926
Resident Births	5,321	5,306
Non-Resident	1,658	1,618
<u>Born to married parents</u>		
Male	2,176	2,130
Female	2,118	2,055
<u>Unmarried parents</u>		
Male	1,391	1,356
Female	1,316	1,385
DEATHS		
<u>Causes (Medical)</u>		
	<u>2008</u>	<u>2009</u>
Heart Disease	827	800
Cancer	841	798
Apoplexy	201	266
Pneumonia	197	205
Diabetes	83	65
Cirrhosis	64	71
Chronic Obstructive Lung Disease	269	280
Premature Infant	34	32
Sudden Infant Death	4	5
HIV/AIDS	6	2
Tuberculosis	1	0
Influenza	4	3
Sickle Cell Anemia	0	2
All other causes	553	815
<small>*One death listed as Tuberculosis meningitis/HIV listed in both categories</small>		
DEATHS		
<u>Causes (Coroner)</u>		
	<u>2008</u>	<u>2009</u>
Accident	203	216
Homicide	26	23
Suicide	40	46
Undetermined	13	6
Pending	0	0

Vital Records—By the numbers (cont'd)

DEATHS (cont.)		
	<u>2008</u>	<u>2009</u>
Male	1,816	1,808
Female	1,748	1,827
TOTAL DEATHS	3,564	3,635
Resident of Allen County	2,593	2,651
Non-Resident	971	980
Fetal Deaths	49	43
<u>Deaths by Age Group</u>		
	<u>2008</u>	<u>2009</u>
Under 28 days	46	42
29 days to 1 year	18	20
1 year to 14 years	26	24
15 years to 24 years	45	36
25 years to 44 years	162	172
45 years to 64 years	753	754
65 years to 74 years	609	612
75 years to 84 years	938	990
85 years and over	967	984
<u>Location of Death</u>		
	<u>2008</u>	<u>2009</u>
Parkview Main Hospital	878	905
Parkview North Hospital	43	42
Lutheran Hospital	618	612
St. Joseph Hospital	136	155
Dupont Hospital	36	32
VA Northern Indiana	26	23
Visiting Nurse and Hospice Home	339	356
Residence, nursing home, other	1,507	1,510
<u>Miscellaneous</u>		
	<u>2008</u>	<u>2009</u>
Paternity Upon Marriage	36	37
Paternity Affidavits	61	81
Correction Affidavits	49	40
Court Ordered Paternity	869	786
Adoptions	256	266
Revenue Collected	\$494,297	\$483,678

Part III Financial Report

Finance

Staff

*Carol Gigli, Dir.
Penni Moran
Joanna Baker
Loretta Foy*

Hours of Operation

Mon.-Fri.
8 a.m. to 5 p.m.

Contact information

Voice: 449-7358
Fax: 427-1391

The Finance Division is responsible for coordinating financial and accounting functions for the day-to-day operation of FWACDOH. The division ensures compliance by meeting internal financial reporting requirements as those set by the Allen County Council, the Allen County Board of Commissioners and the ISDH.

The division is responsible for all personnel records, payroll, attendance records, and tracking of benefits for the 56 full-time employees, 8 part-time employees and 4 people employed contractually by the Department.

FINANCIAL STATEMENT

	<u>2008</u>	<u>2009</u>
Beginning Balance Jan. 1	\$1,910,535.80	\$2,034,204.26
Revenue	3,776,570.15	3,936,598.84
	\$5,687.105.95	\$5,970,803.10
Disbursements	-3,652,901.69	-3,925,439.41
	\$2,034.204.26	\$2,045,363.69

REVENUE SOURCES

	<u>2008</u>	<u>2009</u>
General Property Taxes	\$2,408,099.85	\$2,439,392.16
Excise Tax	193,0667.83	193,871.65
Financial Institution Tax	8,465.00	9,952.00
Commercial Vehicle Excise Tax	18,149.78	18,609.90
Fees (See Addendum #1)	40,123.02	256,030.82
Miscellaneous Fees (See Addendum #2)	979,274.48	1,012,119.93
Interest	14,147.54	6,530.11
Infectious Disease Clinic (IDC)	64.50	10.26
Adjustments	115,179.15	82.01
TOTAL	\$3,776,570.15	\$3,936,598.84

DISBURSEMENTS

	<u>2008</u>	<u>2009</u>
Department of Health	\$2,914,030.12	\$3,122,082.13
Vector Control	286,857.67	285,254.18
I.D.C. (formerly TB Clinic)	452,013.90	518,103.10
TOTAL	\$3,652,901.69	\$3,925,439.41

FEES (ADDENDUM #1)

	<u>2008</u>	<u>2009</u>
Vital Records	\$455,149.80	\$444,522.00*
Food Permits	440,891.02	475,028.68**
Swim. Pool Permits	38,105.00	45,660.00
Water Tests	2,916.00	0.00
Septic Fees	15,365.00	18,955.00
Vaccinations	13,692.66	12,424.00
Tattoo	13,155.00	15,530.25
TOTAL	\$979,274.48	\$1,012,119.93

MISCELLANEOUS REVENUE (ADDENDUM #2)

	<u>2008</u>	<u>2009</u>
Travel Reimbursement	\$313.74	\$388.91
Workforce Capacity Grant	19,015.00	10,000.00
West Nile Virus Reimbursement.	1,000.00	500.00
Refugee Clinic/Physician Grant Reimb.	5,975.00	18,980.00
HUD Grant Reimbursement	12,290.62	23,593.02
Phlebotomist/Lead Grant	0.00	1,557.29
Architectural Reimbursement	0.00	40,950.00
Receipt of Sale of ULV Machine	0.00	500.00
FSSA Reimbursement of Refugees Clinics/Services	0.00	158,661.00
Copies/Miscellaneous Receipts	1,528.66	900.60
TOTAL	\$40,123.02	\$256,030.82

*An additional \$38,339.00 was collected in 2009 from Vital Records which is state mandated to the Coroner Continuing Education Fund.

**An additional \$83,828.07 was collected in 2009 from food permits. By local ordinance, these funds are set aside to help support a food inspector on the Local Health Maintenance Fund.

FUND REPORT**LOCAL HEALTH MAINTENANCE FUND**

	<u>2008</u>	<u>2009</u>
Beginning Balance, Jan. 1	\$318,187.800	\$299,876.60
Receipts		
<i>State Fund</i>	37,500.00	50,000.00
<i>Tobacco Settlement Monies</i>	17,001.00	22,675.00
<i>Interest</i>	3,243.32	1,475.25
<i>Fees - Food Permit</i>	77,801.23	83,828.07
	\$453,733.36	\$457,854.92
Disbursements	-153,856.76	-163,869.59
Balance, Dec. 31	\$299,876.60	\$293,985.33

IMMUNIZATION DONATION FUND

Balance, Jan. 1	\$15,154.43	\$14,961.89
Donations Received	3,850.81	3,888.20
	19,005.24	18,850.09
Disbursements	-4,043.35	-3,125.94
Balance, Dec. 31	\$14,961.89	\$15,724.15

STD CLINIC DONATION FUND

Balance, Jan. 1	\$12,301.05	\$11,554.66
Donations Received	4,461.93	4,379.51
	16,762.98	15,934.17
Disbursements	-5,208.32	-2,312.86
Balance, Dec. 31	\$11,554.66	\$13,621.31

Allen County Onsite Waste Water Management

	<u>2008</u>	<u>2009</u>
Balance, Jan. 1	\$63,841.08	\$63,909.47
Receipts	42,849.55	35,436.91
Interest	678.54	261.00
	\$107,369.17	\$99,607.38
Disbursements	-43,459.70	-40,110.76
Balance, Dec. 31	\$63,909.47	\$59,496.62

Tobacco Master Plan

Balance, Jan. 1	\$146,185.71	\$243,877.47
Receipts	122,354.00	122,085.57
Auditor Correction	111,556.12	0.00
	\$380,095.83	\$365,963.04
Disbursements	-136,218.36	-130,809.49
Balance Dec. 31	\$243,877.47	\$235,153.55

Coroner's Death Certification Fund

Balance, Jan. 1	38,384.50	38,339.00
Receipts	\$41,235.25	\$41,454.00
Disbursements	-38,120.25	-38,547.25
Balance, Dec. 31	\$3,115.00	\$2,906.75

Septic Fund

Beginning Balance, Jan. 1	\$18,429.76	\$37,958.46
Receipts	30,937.50	30,112.50
Interest	261.56	191.88
	46,628.82	68,262.84
Disbursements	-11,670.36	-22,042.83
Balance, Dec. 31	\$37,958.46	\$46,220.01

Public Health/Bioterrorism Coordinator Grant

Jan. 1 through Dec. 31, 2007	\$ 2,926.94	\$ -
Receipts	36,195.24	19,991.55
	\$39,122.18	\$19,951.55
Disbursements	-39,122.18	-19,991.55
Balance, Dec. 31	\$00.00	\$ -

	<u>2008</u>	<u>2009</u>
TB Emergency/Cooperative Grant		
Beginning Balance, Jan. 1	\$ (1,439.90)	\$ (6,980.60)
Receipts	43,518.85	41,391.56
	<u>\$42,088.95</u>	<u>\$34,500.96</u>
Disbursements	-48,969.55	-42,288.08
Balance, Dec. 31	\$(6,890.60)	\$(7,787.12)

St. Joseph Community Health Foundation

Balance, Jan. 1	\$51,748.38	\$12,483.62
Receipts	19,765.04	2,622.50
	<u>\$71,513.42</u>	<u>\$15,106.12</u>
Disbursements	-59,029.80	-7,346.95
Balance Dec. 31	\$12,483.62	\$7,759.17

STD Program Fund

Balance, Jan. 1	\$(1,045.14)	\$(21,497.15)
Receipts	147,913.72	130,903.20
	<u>\$146,868.58</u>	<u>\$109,406.05</u>
Disbursements	-168,365.73	-140,168.66
Balance, Dec. 31	\$(21,487.15)	\$(30,762.61)

Substance Abuse Prevention & Treatment Program

Balance, Jan. 1	\$(2,846.64)	\$(12,521.91)
Receipts	91,538.76	82,914.27
	<u>\$88,692.12</u>	<u>\$70,392.36</u>
Disbursements	-101,214.03	-95,911.79
Balance, Dec. 31	\$(12,521.91)	\$(25,519.43)

HIV/AIDS Program Fund

Beginning Balance, Jan. 1	\$38,977.62	\$(25,311.87)
Receipts	156,905.64	154,011.67
	<u>\$195,883.26</u>	<u>\$128,699.80</u>
Disbursements	-221,195.13	-161,277.42
Balance, Dec. 31	\$(25,311.87)	\$(32,577.62)

	<u>2008</u>	<u>2009</u>
Refugee Interpreter Grant/SJCHF		
Beginning Balance, Jan. 1	-	\$24,579.09
Receipts	39,600.00	44,000.00
	39,600	<u>\$68,579.09</u>
Disbursements	-15,020.91	-37,887.37
Balance, Dec. 31	\$24,579.09	\$30,691.72

Refugee Health Assistance/FSSA

Beginning Balance, Jan. 1	\$ -	\$78,625.00
Receipts	80,000.00	80,000.00
	80,000.00	<u>\$158,625.00</u>
Disbursements	-1,375.00	-158,625.00
Balance, Dec. 31	\$78,625.00	\$ -

Public Health Preparedness Response (H1N1 Influenza)

Beginning Balance, January 1	\$ -	\$ -
Receipts		\$358,549.50
		<u>358,549.50</u>
Disbursements		-273,530.69
Balance, Dec. 31		\$85,018.81

H1N1 Summary

In the fall of 2009, the Fort Wayne-Allen County Department of Health responded to the H1N1 flu pandemic. There was widespread influenza activity during October and November and at least five confirmed deaths due to the H1N1 virus.

Because early vaccine supplies were very limited, the Department reserved the vaccine for high risk groups such as pregnant women, caregivers of infants, persons 6 months through 24 years of age, adults up through age 64 with chronic health conditions, and healthcare workers with direct patient contact.

Some of the vaccine received by the Department was delivered to doctors, hospitals and clinics to give to high-risk patients and staff, and the rest was reserved for the Department's public vaccination clinic at Carew Medical Park. More than over 28,000 people were vaccinated against H1N1 by the Department (around 45,000 in Allen County).

The pandemic required a collaborative response unlike anything in recent memory. The Department's Community Health Nursing and Emergency Preparedness divisions were involved in tracking vaccines and supplies coming into the department. Many of the Department's clinical and environmental field staff were needed to work at the Carew site. Nurses and staff from the Infectious Disease Center also led "strike teams" of vaccinators who went to urban daycare centers to reach high-risk children.

Support staff and others from the Department were also responsible for inputting vaccination consent data into the state's Children and Hoosiers Immunization Registry Program. More than 40 volunteers also assisted in the efforts doing such tasks as vaccinations, forms alphabetizing, and security.

Below is a summary of the H1N1 response:

STAFFING INFORMATION:

- 10,370 hours (minimum) were dedicated by the Department of Health staff to addressing the needs of the overall pandemic response. Of those hours, 8,757 were regular working hours, and 1,613 were overtime working hours.

Executive Summary Cont.

Of the total hours worked:

- 4,232 hours were dedicated to clinical/vaccination time
- 1,438 hours were dedicated to overseeing vaccine and supply deliveries (both incoming and outgoing)
- 2,181 hours were dedicated to data entry, support and data oversight
- 1,317 hours were dedicated to management/oversight and educational efforts
- 1,202 hours were dedicated to communication and finance efforts

** Hundreds of hours were also dedicated by area volunteers to assist with the thousands of paper records that needed to be alphabetized and organized.

VACCINE INFORMATION:

- The main clinic was held at 1818 Carew Street, Suite 300 (Carew Medical Park).
 - Total of 50 days of operation from Oct. 9, 2009 until Feb. 23, 2010 (=257 hours of operation time not including all set-up, etc.).
 - Nearly 25,000 vaccinations occurred at this site. (The Department also operated a variety of "strike team" clinics throughout the community from October 2009-February 2010 to take the vaccine to the people. During these clinics, nearly 5,000 vaccinations were given.

MILEAGE DRIVEN:

- Deliveries, pick-ups, and supply runs occurred daily to multiple clinic sites as well as to approximately 150 medical providers in the community. Nearly 6,500 miles were logged from Oct 9, 2009 to Feb. 1, 2010 related to this part of the pandemic response.

FINANCIAL INFORMATION:

- There were three phases of H1N1 grant funding that were given to local health departments to implement vaccination plans. Allen County could have received up to \$1.1 million from all three phases. A portion of the money was sent to health departments up front to get the operations underway, but the majority of the funding is reimbursable and will only arrive if needed and pre-spent by the county.
- To date, the Department has spent approximately \$500,000 for H1N1 expenses related to the pandemic response. This is mainly for supplies, equipment and contractual staffing.

Annual Report 2009