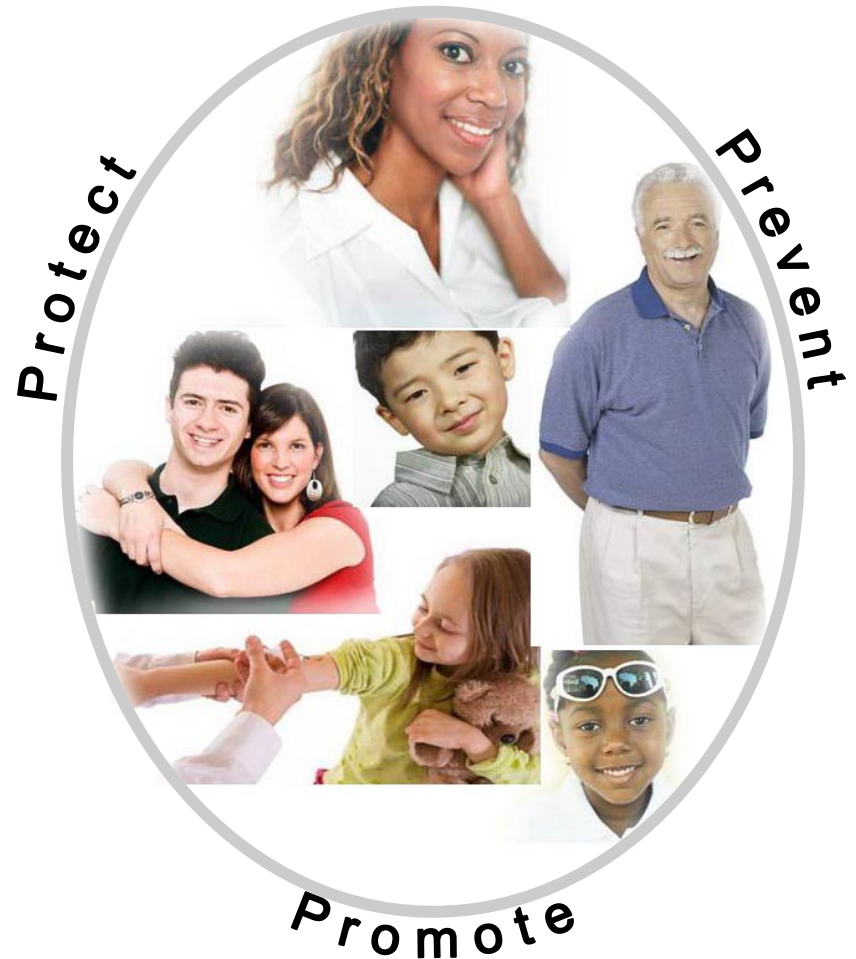




# The Fort Wayne-Alten County

## DEPARTMENT OF HEALTH



**2008 ANNUAL REPORT**



*Annual Report 2008*



# **Annual Report 2008**

## **Fort Wayne-AlLEN County Department of Health**

1 E. Main St., 5<sup>th</sup> Floor  
Fort Wayne, IN 46802  
Voice: (260) 449-7561  
Fax: (260) 427-1391

[www.allencountyhealth.com](http://www.allencountyhealth.com)

*Deborah A. McMahan, MD  
Health Commissioner*

*Mindy Waldron, BS, REHS, CFSP  
Department Administrator*

*Designed and Edited by John Silcox*

*Fort Wayne-AlLEN County Department of Health — 1 E. Main St., 5th floor — (260) 449-7561 — [www.allencountyhealth.com](http://www.allencountyhealth.com)*

# Table of Contents

## PART 1 OVERVIEW

Message from the Health Commissioner..... 3  
 Message from the Department Administrator..... 4  
 Elected Officials..... 5  
 Executive Board of Health..... 6  
 Organizational Structure..... 7  
 About the Department..... 8  
 Community Partners..... 9  
 State/Local Partnerships..... 10

## PART 2 ACHIEVEMENTS & HIGHLIGHTS

Communications/Media..... 12  
 Community Health Nursing..... 13  
 Emergency Preparedness..... 17  
 Food and Consumer Protection..... 18  
 HIV/STD Prevention..... 20  
 STD Clinic..... 24  
 Infectious Disease Center..... 27  
 Informatics..... 30  
 Laboratory Services..... 32  
 Lead Poisoning Prevention..... 33  
 Pollution Control..... 35  
 Vector Control & Environmental Services..... 37  
 Vital Records..... 40

## PART 3 FINANCIAL REPORT

Finance Division..... 44  
 Financial Statement..... 45  
 Fund Report..... 47

*Note: Figures used in this report are based on the best available information at publishing time. This annual report is also viewable at [www.allencountyhealth.com](http://www.allencountyhealth.com).*

# Part I Overview

## *A Message from the Health Commissioner...*



**O**ur mission is to promote the health, safety, and well-being of all residents in our community.

One way we strive to do this is by minimizing the spread of contagious diseases. We are responsible for investigating all infectious diseases that are reportable by Indiana law and local

outbreaks that are the result of any contagious disease. In performing our investigations, we assess the potential magnitude of the outbreak, identify risk factors for acquiring or transmitting the infection, determine those persons who would benefit from a preventive medication or vaccination, and provide information to curb the spread of the disease.

Last year, we experienced a significant increase in the number of cases reported to our department. This increase can be attributed to a variety of factors including: increasing drug resistance in bacteria that commonly affect humans, continuing issues with food safety, and the prevalence of communicable diseases in incoming refugees. This highlights a very important issue – we need to recognize that we live in a living environment. That is; we are surrounded by bacteria and viruses that have the potential to cause human infection under the right circumstances.

For many common infectious diseases, we now have vaccines that provide protection against the potential serious health consequences of infection. However, not all diseases are preventable through vaccination. We need heightened awareness of potential sources of infection and how to best prevent infection, including frequent hand-washing and adherence to home food safety.

Infectious diseases can be more than a nuisance; they can cause significant harm and even death to unsuspecting people. However, if you remember that you live in a living environment and take advantage of vaccinations and other simple public health measures, you can minimize the risk of serious disease to you and your family.

*Deb G. Mankie*

*Fort Wayne-Allen County Department of Health — 1 E. Main St., 5th floor — (260) 449-7561 — [www.allencountyhealth.com](http://www.allencountyhealth.com)*

## *A Message from the Department Administrator...*



**T**his past year, 2008, may go down in my “book” as one of the fastest, yet most productive, years. We were once again overwhelmed with new tasks and less people to perform them – yet we accomplished many great things!

The Department of Health team always seems to step up to the plate and hit it out of the park whenever the need

arises and I’m simply proud to be a part of leading that team. Whether it is meeting a true public health challenge or creating a new program for implementation, I am always amazed at how well we pull together to get the job done.

I would like to say a heartfelt thank you to each and every one of the staff who consistently put forth that 110 percent effort that is required to achieve success in the ever-changing and ever-evolving world of public and environmental health. Without your hard work and dedication to the betterment of the overall health of Allen County citizens, many of our needed projects and programs would never come to fruition.

To our community partners and ever-growing group of “colleagues,” my sincerest thanks also go out to you. Whenever there is a call for help or a call for ideas, you deliver! When I think of the vast amount of endeavors we have embarked upon over the last few years, I’m struck by the fact that they would not have been successes without the input and contributions (both in the form of time and financial commitments) of our very generous and quite knowledgeable group of partners.

Finally, to address the new year – I can only say “full steam ahead.” I’m certain 2009 will be filled with new issues, new challenges, and new opportunities to show that we are a team of committed, energetic, and proactive public health-minded folks who are prepared to answer the call to action, whatever that may be.

*Mandy Saldaña*

## Elected Officials

### Board of Commissioners of Allen County

*F. Nelson Peters (S)*  
*Linda K. Bloom (P)*  
*Bill Brown (V. Pres)*



### Allen County Council

*Maye L. Johnson, 1st District*  
*Paula S. Hughes, 2nd District*  
*Darren E. Vogt, 3rd District*  
*Calvert S. Miller, 4th District*  
*Paul G. Moss, At-large (P)*  
*Paulette L. Kite, At-large*  
*Roy A. Buskirk, At-large (VP)*

### Mayor of the City of Fort Wayne

*The Honorable Tom Henry*



### Fort Wayne City Council

*Tom Smith, 1st District*  
*Karen Goldner, 2nd District*  
*Thomas F. Didier, 3rd District*  
*Mitch V. Harper, 4th District*  
*Timothy M. Pape, 5th District*  
*Glynn A. Hines, 6th District*  
*Marty Bender, At-large*  
*John H. Shoaff, At-large*  
*Liz Brown, At-large*

## Executive Board of Health

The members of the Executive Board of Health are appointed by the Mayor of Fort Wayne (3) and by the Board of Commissioners of Allen County (4). The Board's membership was as follows:

Gregory S. Schmitt, MD, FACS, *President*  
 Term expires Dec. 31, 2009

Janet Paunwar, *Vice President*  
 Term expires Dec. 31, 2011

Joseph Steensma, CIH, MPH  
 Term expires Dec. 31, 2010

Terri Y. Farr, RN  
 Term expires Dec. 31, 2011

Mark Schomogyi, MD  
 Term expires Dec. 31, 2010

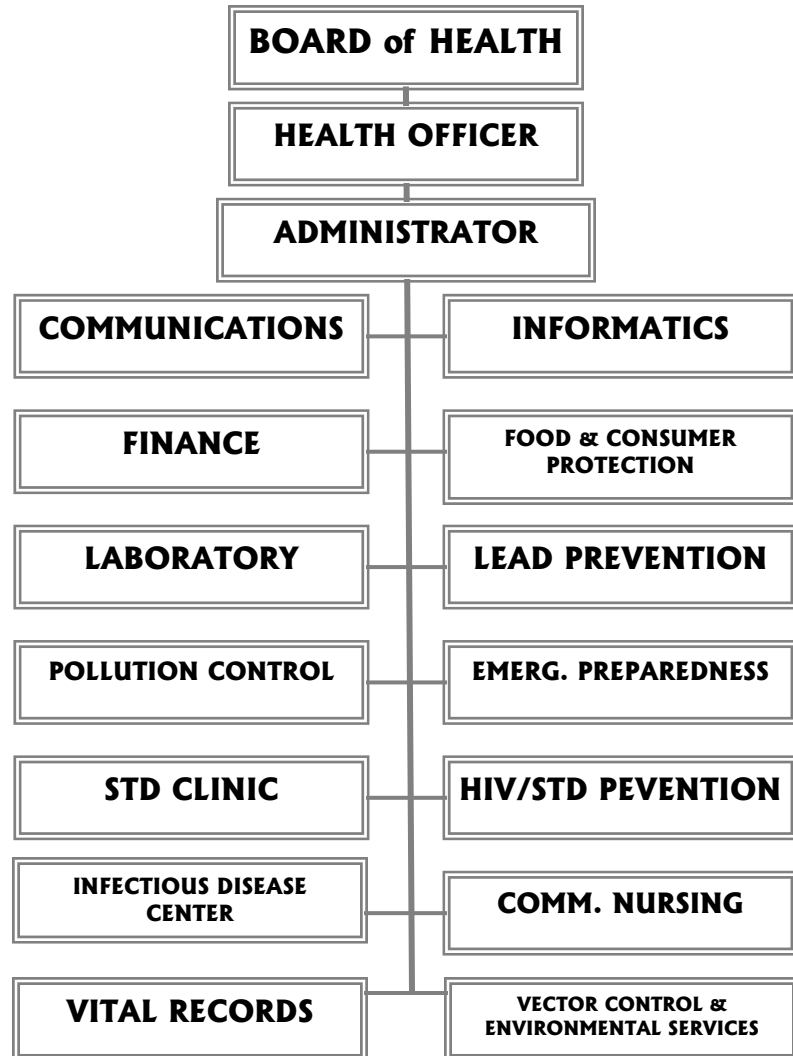
Rick Regadanz  
 Term expires Dec. 31, 2009

Jay Patel, MD  
 Term expires Dec. 31, 2012

Craig Finlayson, Board Attorney

Paul Moss, Allen County Council liaison

## Organizational Chart



## About the Department

### Fort Wayne-Allen County Department of Health

#### Main Office

1 E. Main St., 5<sup>th</sup> Floor  
Fort Wayne, IN 46802  
(260) 449-7561

#### Infectious Disease Center

2040 S. Calhoun St  
Fort Wayne, IN 46802  
(260) 449-7920

#### Vector Control & Environmental Services

2242 Carroll Road  
Fort Wayne, IN 46818  
(260) 449-7459

#### Our Mission...

To promote and monitor a healthy community by providing effective public health services and working toward a hazard-free environment.

#### Results at a glance...

- 7,001 total births recorded in Allen County
- 16 new cases of active TB reported
- 6,370 total visits to the STD Clinic
- 34 percent increase in gonorrhea cases reported in Allen County
- 11,205 doses of vaccine given to children in the Immunization Clinic
- 863 refugees given health screenings
- 1,178 food service establishments licensed
- 467 mosquito pools tested

#### Most common infectious diseases:

- Hepatitis C
- Hepatitis B, chronic
- Strep Pneu Dr.
- Campylobacter
- Salmonella

## Community Partners

The department relies on the cooperation and resources of many other agencies and organizations in Allen County in order to fulfill its mission of providing the most effective delivery of public health services to our community. We thank them.

### Government/ Social Service Agencies

AIDS Task Force  
Allen County Clerk's Office  
Allen County Extension Office  
Allen County Suicide Prevention Council  
American Red Cross  
Associated Churches of Fort Wayne and Allen County  
Catholic Charities  
Center for Behavioral Health  
Center for Nonviolence  
Community Action of Northeast Indiana  
Community Harvest Food Bank  
First Steps of Allen County  
Fort Wayne African-American Cancer Alliance  
Fort Wayne Downtown Rotary Club  
Fort Wayne Housing Authority  
Fort Wayne Medical Education Program  
Fort Wayne Medical Society  
Fort Wayne Rescue Mission  
Fort Wayne Women's Bureau  
H.A.N.D.S  
Habitat for Humanity  
Health Vision Midwest  
Healthier Moms and Babies  
Lutheran Social Services of Indiana  
March of Dimes  
McMillen Center for Health Education  
Planned Parenthood of Greater Indiana  
Retired and Senior Volunteer Program (R.S.V.P.)

St. Joseph Community Health Foundation  
Three Rivers Ambulance Authority  
United Way of Allen County  
Up the Stairs Community Center  
Washington House Treatment Center  
Wayne Township Trustee  
YMCA Women's Shelter

### Hospitals/Health Clinics

ASK Clinic  
Lutheran Health Network  
Matthew 25 Health and Dental Clinic  
Neighborhood Health Clinics  
Park Center  
Parkview Health  
RediMed  
Super Shot, Inc.

### Schools/Universities

Ball State University  
East Allen County Schools  
Fort Wayne Community Schools  
Indiana-University, Purdue-University, Fort Wayne  
Indiana Wesleyan  
International Business College  
Ivy Tech Community College  
Northwest Allen County Schools  
Southwest Allen County Schools  
University of Saint Francis

## State/Local Partnerships

In addition to internal operations, the department's administrative and professional staff participate on various state and local task forces, standing meetings and committees, coordinating councils and interagency groups.

### Local/Regional

Allen County Air Quality Task Force  
Allen County Asthma Coalition  
Allen County Citizen Corps  
Allen County Data Board  
Allen County Disaster Mental Health Team  
Allen County Flu Task Force  
Allen County Human Resources Safety Committee  
Allen County Medical Reserve Corps  
Allen County Pandemic Flu Task Force  
Allen County Partnership for Water Quality Board (ACPWQ)  
Allen County Regional Water and Sewer District board (ACRWSD)  
Allen County School Safety Commission  
America on the Move  
Area Funeral Directors  
Community Infectious Disease Network of Allen County (CIDNAC)  
Core Refugee Services meeting  
Covering Kids Task Force  
District 3 Hospital/Health Department planning committee  
First Steps Council  
Focus on Health  
Girl Scouts of Limberlost Council  
Great Kids Make Great Communities  
Habitat for Humanity family selection committee  
Health Advisory Board (Head Start)  
Health is the Key to My Heart  
Healthcare Access Program (HAP) committee  
Healthy Cities Health Fair  
Homeless Task Force  
Interagency Council on Housing and Homeless Issues  
Kids-Safe Network  
Northeast Indiana AIDS Memorial  
Northeast Indiana AIDS Walk Steering Committee  
Northeast Indiana Environmental Health Association  
Northeast Indiana Corporate Wellness

Public Health Disaster Response Team  
Refugee Core Services Group  
Safe Kids  
Sexual Assault Treatment Center board  
Sickle Cell Advisory Council  
Success by Six  
Suicide Prevention Council  
TB Consortium (Lutheran/Parkview)  
Watershed Team meetings  
WebChart development team  
World AIDS Day planning committee

### State

Children and Hoosiers Immunization Registry Program (CHIRP) User Group  
Indiana Environmental Health Association (IEHA)  
*Wastewater Management Committee*  
*Food Protection Committee*  
Indiana Family Health Council  
Indiana Immunization Coalition  
Indiana Methamphetamine Task Force  
Indiana State Department of Health (ISDH)  
ISDH Genesis Team  
ISDH Bioterrorism Advisory Committee  
ISDH Environment and Housing subcommittee  
ISDH HIV/STD Prevention  
ISDH Mass Prophylaxis Work Group  
ISDH Risk Assessment format protocol group  
Indiana State Hepatitis Advisory Council  
Indiana Vital Records Association  
Indiana Vector Control Association  
Lead-Safe Task Force  
Maumee River Basin Partnership of Local Governments (MRBPLG)  
Vaccinate Before You Graduate

# Part II

## Achievements & Highlights

## Communications/Media

### Programs & Services

- Media & Public Relations
- Crisis Communication
- Health Insurance Portability and Accountability (HIPAA) Compliance

### Staff

*John Silcox, Dir.*

### Hours of Operation

Mon.-Fri.  
8 a.m. to 5 p.m.

### Contact information

Voice: 449-7395  
Fax: 427-1391

### Highlights for 2008

- **Issued** more than 30 news releases and scheduled dozens of media interviews
- **Published** six issues of *Inside FWACDOH*, the department's bimonthly newsletter
- **Produced** five episodes of *Your Community/ Your Health* on topics such as vital records, emergency preparedness, septic system maintenance, and healthy homes
- **Co-produced** educational video on the Community Care Center concept
- **Coordinated** the production of a series of educational videos aimed at Burmese refugees. Initial video covered the health screening process.
- **Coordinated** with Informatics Division on the development of new department Website, [www.allencountyhealth.com](http://www.allencountyhealth.com)
- **Completed** IS 300 and IS 400 training courses for NIMS compliance
- **Trained 26** new staff members on HIPAA privacy rules
- **Developed** a strategic plan for Communications Division
- **Presented** an overview of Communications division to FWADOH staff as part of workforce capacity training
- **Participated** in Allen County Air Quality Task Force and Workplace Wellness initiatives

### Goals for 2009

- **Develop** a records retention and archival policy for department
- **Develop** a release of information policy for the media and general public
- **Identify** and train volunteers who can serve as backup PIOs and field PIOs in the event of a public health emergency
- **Update** department's Crisis & Emergency Risk Communications Plan and integrate into overall Emergency Response Plan
- **Conduct** a department-wide audit to ensure HIPAA compliance



## Community Health Nursing

### Programs & Services

- Free children's immunizations
- Adult Hepatitis B Clinic
- Health screenings for newly arriving refugees
- Lead screening and lead case management
- Disease prevention
- Travel vaccine information
- Recommendations for post exposure rabies prophylaxis to animal bite victims
- General health education

### Staff

**Marlene Crouse, Dir.**  
Dawn Sipes, BSN, RN  
Candy Staadt, AD, RN  
Patty Easterday  
Patti Oelkuch

### Hours of Operation

**Office**  
Mon.-Fri.  
8 a.m. to 4:30 p.m.

**Immunization Clinic**  
Wed. & Fri.  
8:30-11:30 a.m. &  
1-4 p.m.

*Refugee Health screenings Mondays and Tuesdays*

**Contact information**  
Voice: 449-7514  
Fax: 449-3996

### Highlights for 2008

- **Improved** immunization coverage levels for 2-year-olds attending the Immunization Clinic
- **Implemented** the state funded Vaccine Program for Children ineligible for the VFC program
- **Revised** and ramped-up health screening process for newly arriving refugees with the help of community partners and Allen County Council
- **Trained** staff on refugee resettlement and health care issues, including: Office of Refugee Resettlement technical assistance training for newly arriving refugees, on-site visit to refugee health clinics in Chicago, IL., Programming Workshop for Agencies that Assist Newly Arriving Refugees, and Cultural Orientation Workshop
- **Developed** an educational DVD about the screening process for newly arriving refugees in conjunction with Communications Division.
- **Assisted** the Lead Safe/Healthy Homes Division with lead screening and education of parents about risk factors for lead poisoning
- **Conducted** immunization clinics for adults: Rabies pre-exposure prophylaxis for Fort Wayne Animal Care and Control officers, Hepatitis B for city, county and Indiana Department of Transportation employees, Tdap, MMR, and flu for FWACDOH employees, Healthy Cities Health Fair in October, and City-County Flu Clinics in November
- **Co-coordinated** the Focus on Health Site for the City-County Building in April
- **Completed** the required NIMS training for all staff
- **Updated** CPR training for staff
- **Conducted** Employee Safety Day once month for FWACDOH employees
- **Assisted** with fit testing Medical Response Corps (MRC) volunteers at a training event in September
- **Assisted** with Hands Only CPR training of the community in October

### Highlights cont.

- **Participated** in state and community organization meetings: the Indiana Immunization Coalition, CHIRP User Group meetings, Refugee Core Services Groups, Sickle Cell Advisory Group, Asthma Coalition, Success by Six, Three Rivers CPR Task Force, EACS Suicide Prevention Council, Healthy Cities Health Fair Planning Committee, Focus on Health Planning Committee.
- **Coordinated** student nurse orientation programs for IPFW, University of Saint Francis, Ball State University, and Indiana Wesleyan student nurses and functioned as a clinical site
- **Attended** training for lead case managers
- **Attended** the Indiana Immunization Conference

### Goals for 2009

- **Increase** immunization coverage levels for children ages 0 through 18 years of age
- **Identify** and encourage screening of children 6 months through 6 years of age at risk for lead poisoning who visited the Immunization Clinic
- **Provide** administrative and intermediate lead case management of children referred by the Lead Safe/Healthy Homes Division
- **Provide** timely health screenings for newly arriving refugees and timely results regarding health screenings
- **Provide** reports of trends in health screening data of newly arriving refugees to community partners
- **Support** public health activities of community partners in Allen County in 2009

### Disease Prevention – By the numbers

	<u>2007</u>	<u>2008</u>
<b><u>Childhood Immunizations</u></b>		
<b>DOH</b>		
Children seen (# visits)	3,213	2,818
Doses Given	9,673	11,205
Immunization Coverage Levels	76	89
<b><u>Adult Immunizations</u></b>		
<b>Healthy Cities Health Fair</b>		
Flu Vaccine	465	469
Pneumococcal Vaccine	189	192
Tetanus Vaccine	153	171
<b>Flu Clinics</b>		
Flu Clinic (City/County employees)	294	282
<b>Special Flu Clinics</b>		
	112	n/a
<b>Hepatitis B-Doses Given</b>		
City/County Employees	117	79
INDOT	0	50
Hepatitis B (local purchase)	137	47
<b>Other Adult Vaccines</b>		
Tdap	279	311
Tetanus	14	59
*Meningitis (local purchase)	11	n/a
Meningitis	23	30
**MMR	19	135
HIB	13	9
**Varicella	20	52
IPV	21	32
*Adolescent Hepatitis B	182	29
Adult Hepatitis A	n/a	101
Adolescent Hepatitis A	n/a	6
Adult Hepatitis A/B	n/a	41
Influenza	n/a	79
Flu Mist	n/a	2

\* Meningitis vaccine is no longer available for local purchase

\*\* Any student >18 years of age is able to receive Meningitis, Hepatitis B, Varicella and MMR vaccines under VFC guidelines

### Disease Prevention—By the numbers (cont'd)

	<u>2007</u>	<u>2008</u>
<b>Refugee Program</b>		
Refugees Screened	625	863
Hepatitis B & C blood draws	422	633
RPR	417	631
HIV	414	633
Stool	311	14
TB Screen	583	862
Lead Screen	265	417
# Immunized	317	511
Sickle Cell	604	863
<i>Countries of origin: Myanmar, Russia, Congo and Burundi</i>		
	<b><u>2007</u></b>	<b><u>2008</u></b>
<b>Newborn Screens</b>	7	n/a
<b>Animal Bite Reports</b>		
Public Health Nurse follow-up	65	86
<b>Lead Screens (CHN Division Non-Refugee)</b>	32	10
<b>Lead Screens (CHN Division Refugee Re-screens)</b>	n/a	84
<b>Lead Case Management</b>		
<i>*CHN Division assisted the Lead Safe/Healthy Homes Division</i>		
<i>See Lead Division Report for 2008</i>		

N/A = not available

## Emergency Preparedness

### Programs & Services

- Emergency planning and readiness
- Response to local public health emergencies
- Emergency response equipment and supply management
- Training & drills

### Staff

**Brad Witte, Dir**  
Corrie Hixson  
Matt Brokaw

### Hours of Operation

Mon.-Fri.  
8 a.m. to 5 p.m.

### Contact info

Voice: 449-7151  
Fax: 427-1391

### Highlights for 2008

- **Hired** new staff, including – Division Director, Strategic National Stockpile Coordinator, and MRC Coordinator
- **Participated** in ISDH tabletop drill in April and functional drill in June
- **Attended** CDC mass prophylaxis training in December
- **Received** emergency response equipment from grant through ISDH
- **Initiated** review and update of the Emergency Response Plan

### Goals for 2009

- **Complete** review and update of the Emergency Response Plan
- **Obtain** additional emergency response equipment under grant funding
- **Prepackage** load-outs of equipment and supplies for field use
- **Set up** and run several response drills; tabletop, functional and full-dress drills.
- **Put** on several readiness training conferences
- **Continue** to train the staff on the Emergency Response Plan

## Food & Consumer Protection

### Programs & Services

- Food establishment inspections
- Facility plan reviews and related inspections
- Food-borne illness investigations
- Hotel/Motel complaint investigations
- Licensing and inspection of tattoo/body piercing establishments

### Staff

**Dawn McDevitt, Dir.**  
Steve Schumm, Asst. Dir.  
Ann Applegate  
Susan Nodine  
Holly Sanderson  
Amanda Havens  
Ruby Bates

### Hours of Operation

Mon.-Fri.  
8 a.m. to 5 p.m.

### Contact information

Voice: 449-7562  
Fax: 427-3010

### Highlights for 2008

- **Continued** staff development in enforcing and educating on food safety. In-house educational training sessions were conducted for staff training and development.
- **Presented** ServSafe Food Protection Manager Certification Course to approximately 50 key food protection personnel from area food establishments. Division Director and Assistant Director achieved certification to conduct ServSafe training and certification.
- **Participated** in Reduced Oxygen Packaging and Hazard Analysis Critical Control Point training provided by U.S. Food and Drug Administration.
- **Attended** bi-annual ISDH Food Protection Symposium. Director was a speaker during the conference.
- **Awarded** Food Protection Excellence Award
- **Attended** the Indiana Environmental Health Association (IEHA) Fall Educational Conference. The Director represents Northeast Indiana as a member of the IEHA Food Protection Committee.
- **Served** as a member of Board for Anthis Career Center Culinary Arts Program
- **Worked** in cooperation with Purdue University and ISDH to provide educational workshop regarding farmer's markets
- **Provided** educational training and presentations to various food handlers, schools, and service organizations on regulations and safe food handling practices

### Goals for 2009

- **Reduce** the likelihood of transmission of food borne illness pathogens through education
- **Continue** staff development through educational opportunities
- **Prevent** the spread of blood borne pathogens and *Methicillin-resistant Staphylococcus aureus* (MRSA) infection in the tattoo and body piercing facilities through education

Goals cont.

- **Ensure** smoke free environment for all public places, designated outdoor venues, and places of employment in Allen County in accordance with Allen County Smoking Ordinance
- **Ensure** sanitary conditions of hotels and motels and the prevention of the spread of health hazards and concerns

## Consumer Protection –By the Numbers

### Food Licenses Issued

	<u>2007</u>	<u>2008</u>
Food Service Establishments	1,225	1,178
Food Market Establishments	401	428
Mobile Food Units	113	97
Temporary Food Establishments	740	770
Vending	11	12

### Food Inspection Activity

	<u>2007</u>	<u>2008</u>
Food Service/Mobile Food Service Estab.	2,218	2,188
Food Market/Mobile Food Market Estab.	607	660
Temporary Food Establishments	1,077	1,067
Follow-ups/Recalls	284	479
Consumer Food Complaints	498	503
Preliminary Inspections	324	360
Opening Inspections	221	228
Plan Reviews Conducted	57	103
Investigations	821	595

*(fire, reportable diseases, operating without a permit)*

### Tattoo/Body Piercing

	<u>2007</u>	<u>2008</u>
Establishments Licensed	27	37
Mobile Licensed	0	1
Artists Licensed	74	123
Guest Artist Licensed	0	1
Inspections and Re-Inspections	13	77
Complaint Investigations	9	6

### Motel/Hotel Inspections

	<u>2007</u>	<u>2008</u>
Complaints	25	25
Re-inspections	0	21

## HIV & STD Prevention

### Programs & Services

- HIV/STD prevention and education
- Disease surveillance through screening and contact tracing
- Case-follow-up

### Staff

*Kathy Thomson, Dir.  
 Rochelle Feldheiser  
 Dwight James  
 Pamela Sully  
 Hilda Hill  
 Julie Ensley*

### Hours of Operation

Mon.-Fri.  
 8 a.m. to 5 p.m.

### Satellite Clinic

Schedule available on Website or call 449-3021 for details of locations and hours

### Contact information

Voice: 449-3021  
 Fax: 449-3507

### Highlights for 2008

- **3,371 STDs reported** in 2008 in District III (gonorrhea, chlamydia, syphilis, and HIV). STDs are the most common of the reportable communicable diseases. Chlamydia remains the most common bacterial STD reported in Allen County teenagers.
- **Climbing** rates in chlamydia, gonorrhea, HIV and syphilis seen across the board in 2008. In Allen County, chlamydia rates jumped 6 percent, gonorrhea rates escalated 34 percent. HIV rates rose 5 percent and early syphilis rates doubled with a 100 percent increase. Strategies were implemented in various venues to increase awareness, prevention and testing in 2008. CDC announced a recommended gonorrhea treatment change to combat resistant strains of gonorrhea being identified in other parts of the U.S.
- **Completed** department-wide strategic planning and development training and wrote division 2009 strategic plan
- **Integrated** a new fifteen-minute screening HIV test into the test types available for screening in clinic or satellite HIV test sites
- **Screening** efforts identified 30 percent of the newly diagnosed HIV cases in 2008. HIV counseling sessions totaled 3,388. 188 syphilis reactors were followed up with 25 cases identified and treated. Eight early cases < one years duration. Two over a years duration and 15 late latent cases.
- **Promoted** HIV National Day of testing with a community project. The Drug and Alcohol Consortium (DAC), the Prevention Clinic and the Health Disparity Coalition were all collaborative partners for two large testing events with live radio remotes. More than 175 individuals were counseled and tested for HIV during these events.

### Highlights cont.

- **Successfully** researched, wrote and submitted our competitive HIV/STD Prevention grants for 2009 funding. Allen County received 2009 grants for HIV Counseling/Testing/ Partner Notification Services, HIV Comprehensive Risk Counseling Services, STD Prevention, and HIV Substance Abuse Special Populations.
- **Supported** the March launch of ISDH laboratory's HIV LimsNet software by providing the beta testing for the STAHRS system earlier in the year. The LimsNet program allows us to send and receive test requisitions and results electronically with ISDH laboratory.
- **Surveillance efforts** identified over 55 percent of the total Allen County STD cases reported in 2008 resided in the following zip code areas: 46806 (23 percent), 46816 (11 percent), 46803 (10 percent), 46805 (7 percent), and 46801 (7 percent).

### Goals for 2009

- **Reduce** the transmission of HIV/STD
- **Provide** timely HIV/STD surveillance for District III
- **Increase** HIV/STD Prevention awareness in the community
- **Increase** Hepatitis A/B prevention in the STD Clinic
- **Enhance** the training and development of the existing workforce

### Surveillance for ALLEN COUNTY: 2008 Total Cases and Rates

DISEASE	2007	2008	% Change
<b>Chlamydia</b>	1,762	1,872	
Rate/ 100,000 pop.	507.3	539.0	+6.2%
<b>Gonorrhea</b>	692	930	
Rate/ 100,000 pop.	199.2	267.8	+34.4%
<b>HIV</b>	21	22	
Rate/ 100,000 pop.	6.0	6.3	+4.8%
<b>Syphilis</b>	2	4	
Rate/ 100,000 pop.	0.6	1.2	+100%

2007 and 2008 rates based on July 1, 2006 estimated Allen County census, population 347,316

**Surveillance for DISTRICT 03: Northeast Indiana\*  
2008 Age Distribution by Disease**

AGE	CHLAMYDIA		GONORRHEA		HIV		P&S SYPH	
	2007	2008	2007	2008	2007	2008	2007	2008
0 -14	18	20	7	6	1	0	0	0
15-19	737	796	182	249	0	0	1	2
20-24	828	903	264	390	2	1	0	3
25-29	366	362	134	172	7	6	1	0
30-34	133	130	72	92	8	3	0	0
35-39	52	68	33	49	5	7	0	0
40-44	24	29	23	23	3	6	1	2
45 +	22	21	35	17	4	7	0	0
UNK	7	7	1	0	0	0	0	0
2007 TOT.	2,187		752		30		3	
2008 TOT.	2,336		998		30		7	
% Change 2007-2008	+7%		+33%		0%		+133%	

\*District 03 is the HIV/STD Prevention Programs' surveillance jurisdiction and is comprised of the following counties: Lagrange, Steuben, DeKalb, Noble, Kosciusko, Whitley, Allen, Wabash, Huntington, Wells, Adams and Jay.

## STD Clinic

### Programs & Services

- Testing and treatment for sexually transmitted diseases
- Contact tracing/screening/case follow-up to prevent disease spread

### Staff

**Julie Reece, Dir.**  
*Deb Trabel, RN, MSED*  
*Laura Bartlett, RN (p/t)*  
*Lisa Little, LPN (p/t)*  
*Jennifer Myers, CMA*  
*Felicia Nino*

### Hours of Operation

Mon.-Fri.  
 8 a.m. to 11:30 a.m.  
 12:45 to 5 p.m.

\*Walk-in appointments  
 Monday and Thursday  
 mornings starting at  
 8 a.m.

### Contact information

Voice: 449-7504  
 Fax: 449-3507

### Highlights for 2008

- **Increased** the number of clients served in the STD Clinic by 6 percent over the last year
- **Increased** the number of clients tested for Chlamydia and gonorrhea by 18 percent
- **Updated** Protocols and Policies and Procedures as needed. Significant changes were made to the Herpes Simplex Virus protocol to allow for referral to an outside lab to have blood testing for this infection.
- **Implemented** the ISDH Pregnancy Testing program which provides pregnancy tests for females
- **Participated** in staff development training provided by FWACDOH
- **Assisted** with developing a Professional Code of Conduct which was later implemented for the entire FWACDOH
- **Assisted** the ISDH in the development of a Sexual Violence Prevention Plan by hosting a regional meeting and inviting community partners to assist in the process
- **Maintained** quality assurance by monitoring Web chart documents for completeness
- **Developed** a Strategic Plan for the STD Clinic and HIV/STD Prevention divisions which is reflected in the goals for 2009
- **Provided** clinical instructional experiences for nursing and medical assisting students from IPFW, USF, IW and IBC

### Goals for 2009

- **Develop and implement** an appointment log which will allow tracking of the number of clients turned away for an appointment due to a full schedule. This information will be included in the STD Clinic monthly reports.
- **Work** with IT to increase capacity of the electronic medical record to generate reports that will be useful for the functioning of the STD Clinic and STD/HIV Prevention Divisions

*Goals (cont.)*

- **Collaborate** with community partners in developing a community prevention plan which focuses on youth
- **Develop and implement** a client satisfaction questionnaire to survey clients bi-annually to validate client perception of services and increased awareness of HIV/STD prevention
- **Increase** the number of Hepatitis A/B vaccine doses given to clinic clients by a minimum of 2 percent
- **Staff will participate** in a minimum of 3 Cincinnati STD Training Center E-learning sessions

**Testing for STDs – By the numbers**

	<u>2007</u>	<u>2008</u>
<b>Total Clinic Visits</b>	<b>6,033</b>	<b>6,370</b>
Female	47.39%	43.21%
Male	52.61%	56.79%
<b><u>Age Group</u></b>		
15 - 19	15.29%	14.61%
20 - 24	29.27%	27.79%
25 - 29	20.77%	20.03%
30 - 34	9.93%	11.08%
35 - 44	15.00%	16.20%
>44	9.39%	10.03%
<b><u>Race</u></b>		
White	53.15%	51.28%
Black	40.67%	41.46%
Other	6.21%	7.27%
<b>Chlamydia</b>		
Total Tests	3,039	3,591
Total Positive	492	624
Positivity Rate	16.19%	17.38%
<b>Gonorrhea</b>		
Total Tests	3,041	3,591
Total Positive	258	359
Positivity Rate	8.48%	10.00%

**Testing for STD's – By the numbers (cont'd)**

	<u>2007</u>	<u>2008</u>
<b>Syphilis</b>		
Total Tests	2,730	2,998
Primary Syphilis	1	3
Secondary Syphilis	2	3
Early Latent Syphilis	1	0
Late Latent Syphilis	6	6
Total Cases	10	12
Positivity Rate	0.37%	0.40%
<b>Trichomoniasis</b>	339	404
<b>Bacterial Vaginosis</b>	445	612
<b>Genital Wart Treatment</b>		
Cryotherapy	388	375
TCA	574	559
Total Warts Treatments	962	934
<b>Herpes Simplex Virus</b>		
Total Tests	62	131
Total Positive	39	60
<b>Hepatitis B</b>		
Total Tests	327	319
Total Positive	13	7
<b>Hepatitis C</b>		
Total Tests	297	416
Total Positive	22	17
<b>Hepatitis B Vaccine Given</b>		
First Vaccine	374	332
Second Vaccine	238	240
Third Vaccine	188	189
Fourth Vaccine	0	8
Total Hep B Vaccine Given	800	769
<b>HIV</b>		
Total Tests	2,471	2,910
Total Positive	8	9

## Infectious Disease Center

### Programs & Services

- Monitor, prevent, treat and educate the community on all reportable communicable diseases
- Treatment for active and latent tuberculosis
- Contact investigations for active tuberculosis and other reportable communicable diseases
- Site investigations for all unusual occurrence of disease

### Staff

**Scott Rosheck, Dir.**  
*Jessica James, RN*  
*Dori Hopkins, RN*  
*Kimberly Chapple, RN*  
*Hannah Opliger, RN*  
*Lisa Little, LPN (p/t)*  
*Tamar Brewer, MA*  
*Cruz Bahena*  
*Phil Steigerwald*  
*Anitra Mitchell*  
*Audrey Lapsley*  
*Laquisha Stapleton*

### Hours of Operation

Mon.-Fri.  
8 a.m. to 5 p.m.

### Contact information

Voice: 449-8984  
Fax: 449-3813

### Highlights for 2008

- **Worked** with other FWACDOH divisions to provide screening and treatment for nearly 900 Burmese refugees
- **Added** additional staff to aid in translation and interpretation for the growing refugee population in Allen County
- **Provided** information and awareness to the community about transmission, prevention and treatment of *Methicillin-resistant Staphylococcus Aureus* (MRSA)
- **Developed** and implemented a strategic plan
- **Attended** specialized workforce capacity training

### Goals for 2009

- **Continue** to identify, effectively treat, and cure patients with active pulmonary tuberculosis
- **Continue** to identify contacts to active cases of tuberculosis, and provide evaluation and treatment to those with latent tuberculosis infection
- **Screen** high-risk populations and assure that infected individuals are quickly treated to prevent development of active tuberculosis disease
- **Provide** timely and thorough case investigation and reporting of mandatory reportable communicable diseases
- **Assess** communicable disease occurrences for local trends and implement strategies to decrease disease transmission
- **Assist** with department-wide plans for emergency preparedness as it relates to communicable diseases and mass contact investigation
- **Work** with all available community partners to screen and medically manage the projected 800 Burmese refugees that will likely come to Allen County in 2009
- **Establish** a reimbursement program (Medicaid) to recover costs for providing medical services to refugees and others who participate in Medicaid

## Infectious Disease – By the numbers

	<u>2007</u>	<u>2008</u>
<b>Cases of Tuberculosis</b>		
New Cases of Tuberculosis Reported	17	16
Cases of Tuberculosis Transferred from Another Jurisdiction	0	0
<b>TOTAL served</b>	<b>17</b>	<b>16</b>
<b>Physician Visits</b>	<b>n/a</b>	<b>1,958</b>
<b>Contacts Evaluated</b>	<b>246</b>	<b>115</b>
<b>Tuberculin Skin Testing</b>		
Contacts	424	234
Source/Associate Investigation	14	1
Refugees	583	862
Targeted Skin Testing	28	19
Community Referrals for individuals with symptoms or high-risk medical conditions	111	64
Routine Community Skin Testing	5	0
<b>TOTAL</b>	<b>1,165</b>	<b>1,180</b>
<b>Satellite Laboratory Services</b>		
Clients Visits	443	635
Specimens Collected	940	715
<b>Directly Observed Therapy Visits</b>		
In Clinic	1,099	939
In Field	3,399	5,405
<b>TOTAL</b>	<b>4,498</b>	<b>6,344</b>
<b>Outbreak Investigations</b>	<b>4</b>	<b>1</b>

n/a = not available



## Infectious Disease – By the numbers

### Reported Communicable Diseases

	<u>2007</u>	<u>2008</u>
<i>Campylobacter</i>	26	31
<i>Cryptosporidium</i>	6	20
<i>E Coli, 0157(+other)</i>	1	2
<i>Encephalitis, West Nile</i>	1	0
<i>Encephalitis, La Crosse</i>	0	0
<i>Haemophilus B</i>	2	0
<i>Hepatitis A</i>	2	2
<i>Hepatitis B, Chronic</i>	41	72
<i>Hepatitis B, Acute</i>	3	1
<i>Hepatitis B, Perinatal</i>	3	3
<i>Hepatitis B, Pending</i>	0	0
<i>Hepatitis C</i>	192	316
<i>Histoplasmosis</i>	8	6
<i>Legionellosis</i>	7	2
<i>Listeriosis</i>	1	1
<i>Lyme Disease</i>	1	8
<i>Malaria</i>	2	1
<i>Measles</i>	1	0
<i>Meningitis, Aseptic</i>	12	13
<i>Meningitis, Bacterial (invasive)</i>	5	3
<i>Mumps</i>	5	13
<i>Pertussis</i>	11	9
<i>Rocky Mountain Spotted Fever</i>	0	0
<i>Rubella</i>	1	0
<i>Salmonella</i>	39	23
<i>Shigella</i>	0	11
<i>Strep Invasive Group A</i>	5	7
<i>Strep Group B Invasive</i>	10	13
<i>Inv Strep Pneumococcal</i>	1	0
<i>Strep Pneu Dr</i>	28	44
<i>Toxic S. Syndrome</i>	1	0
<i>Yersinosis</i>	0	0
<i>Influenza Death</i>		4
<b>Total</b>	<b>415</b>	<b>605</b>

## Informatics

### Programs & Services

- Develop and maintain surveillance and information systems
- Internal IT support for department
- Maintain departmental Web site
- HIPAA Security Officer

### Staff

*Jana Sanders, Dir.*  
*Cindy Wable*

### Hours of Operation

Mon.-Fri.  
8 a.m. to 5 p.m.

### Contact information

Voice: 449-7120  
Fax: 449-3010

### Highlights for 2008

- **Continued** to map septic systems with Global Positioning System (GPS) and Geographical Information System (GIS) technology
- **Developed** new department Web site, [www.allencountyhealth.com](http://www.allencountyhealth.com)
- **Developed** Consolidated Enforcement Platform which combines all environmental services databases into one Web-based platform
- **Migrated** more than 65 users and workstations to the active directory
- **Developed** a strategic plan for 2009
- **Refreshed** 20 percent of department's desktops with new systems
- **Improved** clinical client services through information sharing with community partners
- **Initiated** a Time and Attendance program to be implemented in 2009
- **Facilitated** Allen County iMAP with the creation of a Web-based viewing GIS map for Pollution Control Division

### Goals for 2009

- **Implement** the Consolidated Enforcement Platform
- **Continue** to update department's electronic medical record to meet ever changing demands faced at clinics
- **Create** an internal Web-based viewing GIS map for Food and Consumer Protection Division
- **Implement** Time and Attendance software for department employees
- **Implement** 2009 Informatics Division strategic plan
- **Ensure** a competent and technical departmental workforce by conducting staff development
- **Provide** a technologically-based infrastructure that allows divisions to maintain and produce timely and secure data

## Accessing the Web – By the numbers

Page	Hit Counters	
	2007	2008
Index Page	26,527	27,347
Vital Records	9,559	10,592
Community Health Nursing	7,500	9,481
Educational Materials	1,342	8,546
Food/Consumer Protection	5,709	5,124
HIV/STD Prevention	4,055	4,528
Communicable Disease Reporting	1,389	4,330
STD Clinic	3,316	3,544
Infectious Disease Center	2,240	2,723
Pollution Control	1,291	2,026
Vector Control	1,689	1,910
Communications	2,003	1,724
Health Professional	1,381	1,437
Laboratory	1,051	1,286
Alerts/Advisories	2,179	1,238
Executive Board of Health	678	1,105
Lead Prevention	1,484	1,094
Emergency Preparedness	753	1,059
Administrator	557	645
Health Commissioner	533	600
Medical Reserve Corps	32	400
Smoking Resources	146	377
Informatics	249	264
Smoking Complaint	257	261
Volunteer Registration	156	198

\*Hit Counters count only visitors who enter through the home or index page.

Month	Page Views**	
	2007	2008
January	25,380	24,446
February	21,482	22,622
March	25,855	23,929
April	21,857	25,827
May	24,510	27,526
June	24,368	27,811
July	22,700	29,642
August	24,771	28,423
September	21,973	33,733
October	26,746	32,166
November	20,334	29,000
December	18,130	28,053
<b>TOTAL</b>	<b>278,106</b>	<b>333,178</b>

\*\*A Page View is a "hit" counter that only counts the HTML pages, not the graphics. So each request of a page generates an increase of one. This is more accurate than Hit Counters.

## Laboratory Services

### Programs & Services

- Water sampling testing
- Cultural and serological analysis
- E. Coli determinations/dye packet results for Pollution Control division

### Staff

Carolyn Chandler  
Kathy Doseck

### Hours of Operation

Mon.-Fri.  
8 a.m. to 5 p.m.

### Contact information

Voice: 449-7359  
Fax: 427-1391

## Laboratory Analysis— By the numbers

	2007	2008
<b>CLINICAL ANALYSIS</b>		
GONORRHEA	4,719	4,740
SYPHILIS	4,341	4,427
QUALITY CONTROL	2,612	2,786
STD SEND OUTS	5,744	8,413
HIV	2,303	690
ADDITIONAL STD'S	1,466	1,568
<b>WATER ANALYSES</b>		
POTABLE	379	199
NON-POTABLE	1,208	938
POOLS	258	67
HETEROTROPHIC PLATE COUNT	348	142
CONFIRMATORY TESTS	720	914
PLATED MEDIA PREPARATION	1,691	221
QUALITY CONTROL TESTS	5,111	2,634
FOOD COMPLAINT ANALYSIS	16	0

## Lead Poisoning Prevention

### Programs & Services

- Lead case management
- Risk assessments
- Samplings/inspections
- Education/prevention

### Staff

**Amy Hesting, Dir.**  
*Nicole Gaunt*  
*Loaine Hagerty*  
*Cindy Wable*  
*Ron Lipinski (p/t)*  
*Joshua Blauvelt (p/t)*  
*Janet Mitchell (p/t)*  
*Amy Shepherd (p/t)*  
*Aye Ma (p/t)*  
*Kristi Hughes (p/t)*  
*Evangelina Herrera (p/t)*  
*Barb Owen*

The Community Health Nursing Division provides Intermediate & Administrative Case Management

### Hours of Operation

Mon.-Fri.  
8 a.m. to 5 p.m.

### Contact information

Voice: 449-8600  
Fax: 427-1391

*The Allen County Lead Poisoning Prevention Program (CLPP) is a collaboration between the Fort Wayne-Allen County Department of Health and the St. Joseph Community Health Foundation.*

### Highlights for 2007

- **Began** developing a Burmese lead poisoning study with the CDC and ISDH
- **Developed** the Allen County Healthy Homes assessment tool
- **Assisted** the City of Fort Wayne with the successful implementation of the HUD Lead Hazard Control grant
- **Transitioned** from the Allen County Childhood Lead Poisoning Prevention Program to the Allen County Healthy Homes Program

### Goals for 2008

- **Reduce** lead hazards in homes in Allen County through timely lead case management services, lead risk assessments and lead hazard remediation
- **Increase** the number of Healthy Homes in Allen County through the increased awareness of the Allen County Healthy Homes Program by both our clients and the community as a whole and through remediation of health problems found in the home
- **Increase** the identification of asthma cases and triggers in homes in Allen County through screening and referrals for asthma services
- **Link** families with lead poisoned children to appropriate agencies and programs to assist them in strengthening their family and mitigating the effects of childhood lead poisoning
- **Increase** staff knowledge of lead and healthy homes issues
- **Develop** and implement a developmental assessment tool that will identify areas of delay in refugee children
- **Identify** non-traditional sources of lead poisoning in the refugee community

## Lead Program – By the numbers

	<u>2007</u>	<u>2008</u>
<b>Number of children receiving case management services as of 12/31/08*</b>		
Initial Phase	46	4
Intensive Phase	158	187
Intermediate Phase	14	26
Administrative Phase	6	4
<b>Number of children diagnosed with Elevated Blood Lead Level</b>	<b>105</b>	<b>119</b>
<b>Case management work</b>		
Number of case management activities	2,272	2,576
Developmental assessments	52	29
Family assistance (hours)	261	406
<b>Environmental lead work</b>		
Lead risk assessments, inspections re-inspections & samplings	115	140
Lead complaint investigations	1	0
<b>Screening work</b>		
Total Screening	6,163	6,001
Routine Screening (immunization clinic & doctors)	4,297	4,684
Targeted screening	1,866	1,317
<b>General lead work</b>		
Lead education & outreach activities	46	32
Grant proposals submitted	5	0
Grants received	3	0**

\* Community Health Nursing staff provides Intermediate and Administrative Case Management. Each child's case may have been case managed in different phases by different case managers and community health nurses throughout the year.

\*\* There were three grant extensions

## Pollution Control

### Programs & Services

- Inspecting and mapping septic systems
- Investigating sewage complaints
- Swimming pools/spas sampling

### Staff

**Gary Chapple, Dir.**  
 Mark Herber, Asst. Dir.  
 Kathy Doseck  
 Jack Gensic  
 Ron Lipinski  
 Mike Jones  
 Josh Blauvelt  
 Amanda Woenker  
 Jeni Gregory

### Hours of Operation

Mon.-Fri.  
 8 a.m. to 5 p.m.

### Contact information

Voice: 449-7530  
 Fax: 449-3010

### Highlights for 2008

- **Continued** implementation of operating permit renewals for the Allen County Onsite Wastewater Management District
- **Inspected** the systems on existing homes as operating permits came up for renewal
- **Continued** to improve inspection and follow-up process
- **Completed** educational DVD for homeowners
- **Continued** utilizing Geographic Information System maps for site evaluations
- **Continued** to improve follow-up and enforcement on complaint and sewer connection issues

### Goals for 2009

- **Reduce** improperly treated sewage in the environment
  - ◆ Reduce the number of systems not on record with the FWACDOH by at least 25 in 2009
  - ◆ Increase the number of existing homes connected to public sewer by at least 100 in 2009
- **Improve** compliance of public pools
  - ◆ Reduce pool closures due to compliance issues by 20 percent in 2009
- **Improve** professional knowledge of staff
  - ◆ All inspectors will become registered Environmental Health Specialists

## Pollution Control – By the numbers

	<u>2007</u>	<u>2008</u>
Construction Permits Issued	145	121
Inspection/New Installs/Initial	134	192
Inspection/New Installs/Re-inspection	587	376
Inspections/Existing Systems	174	522
Operation Permits	131	215
Sewage Complaints/Inspections	92	117
Sewage Complaints/Re-inspection	140	157
Dye Tests	31	51
Orders to Correct Faulty Systems	9	15
Miscellaneous Complaints/Investigations	284	147
Phase I Investigations	130	128
Public Sewer Connections	201	296
Burning Investigations	7	1
Pool / Spa – Test Stripping	3,574	3,542
Pool / Spa – Inspection	273	327
Pool / Spa – Re-inspection	118	124
Pool / Spa – Complaint	9	9
Pool / Spa – Water Samples	161	68
Lab Samples	610	821
Site Assessments	90	137
Soil Wetness Tests/Initial Test	136	91
Soil Wetness Tests/Retest	136	105
<b>Totals</b>	<b>7,172</b>	<b>7,562</b>

## Vector Control & Environmental Services

### Programs & Services

- Control of rodent populations through education, sanitation code enforcement, and poison bait placement
- Surveillance for and control of diseases spread by mosquitoes through integrated pest management measures, public education, trapping, mosquitofish placement, larviciding and adulticiding
- Investigation of complaints involving unsanitary living conditions, cockroaches, noxious odors, mold and discarded refrigerators
- Investigation of animal bites to humans

### Staff

*Dave Fiess, Dir.*  
*Tom McCue*  
*Leonard Young*  
*Ray Capps*  
*Francis Koch*  
*Pat DeHaven*

### Hours of Operation

Mon.-Fri.  
 8 a.m. to 5 p.m.

### Contact information

Voice: 449-7459  
 Fax: 449-7460

### Highlights for 2008

- **Created** a mission statement and strategic plan to make the division more effective and efficient
- **Utilized** a more accurate test to identify West Nile virus in adult female mosquitoes (Testing process was moved from the Laboratory Services Division to Vector Control and Environmental Services Division)
- **Licensed** and certified new employees as Indiana pesticide applicators in residential pest control

### Goals for 2009

- **Reduce** the number of adult mosquito samples positive for an arboviral disease
- **Reduce** environmental hazards in homes
- **Improve** professional knowledge of employees

## Vector Control – By the numbers

<b>Rodent Data</b>	<b>2007</b>	<b>2008</b>
Initial Complaints	700	702
Initial Surveys	651	640
Bait Used (pkgs.)	3,166	1,795
Door Hangars	63	75
Recall Inspections	850	1,054
Recall Surveys	829	1,030
Bait Used (pkgs.)	1,416	1,915
Door Hangars	42	65
Alley Surveys	528	3,267
Bait Used (pkgs.)	910	3,271
Conditions Referred for Code Violations	10	155
Legal Notifications	86	93
Fines	0	1
Court Summons	0	0

### Mosquito Data

Citizen Complaints	244	339
Breeding Site Inspections	4,644	4,201
Breeding Sites Treated	743	807
Larval Specimens Collected	630	731
Mosquitofish Sites	92	78
Dead Birds Reported	379	222
ULV Fogging (miles)	8	310
Mosquito Samples Tested	342	467
WNV-Positive Samples	1	19

### Rabies Data

Animal Bite Investigations	73	116
Animal Samples Driven to ISDH	8	8

### Environmental Services

Mold—Initial Inspections	84	47
Mold — Recall Inspections	48	31
Warning Notice	0	0
Warning Letter	2	1
Cockroaches — Initial Inspections	57	67
Cockroaches — Recall Inspections	42	107
Warning Notice	2	1
Warning Letter	4	1
Tires -- Initial Inspections	33	55
Tires — Recall Inspections	5	51
Warning Notice	1	3
Warning Letter	1	53

## Vector Control – By the numbers

Environmental Services Cont.	2007	2008
Trash & Debris — Initial Inspections	14	40
Trash & Debris — Recall Inspections	13	45
Warning Notice	2	4
Warning Letter	1	8
Unsanitary Conditions — Initial Inspections	46	53
Unsanitary Conditions — Recall Inspections	57	74
Warning Notice	0	0
Warning Letter	3	1
Un-maintained Pool Inspection—Initial	n/a	106
Un-maintained Pool Inspection—Recall	n/a	288
Warning Notice	n/a	4
Warning Letter	n/a	124
Methamphetamine Lab Occurrence Reports	0	13
Methamphetamine Lab Abatement Order	0	5
Refrigerator/Freezer w/doors — Initial	3	26
Refrigerator/Freezer w/doors — Recall	4	26
Warning Notice	1	15
Warning Letter	0	0
Noxious Odors — Initial Inspections	17	30
Noxious Odors — Recall Inspections	5	26
Warning Notice	0	0
Warning Letter	1	0
Small Spills — Initial Inspections	5	4
Small Spills — Recall Inspections	2	2
Warning Notice	1	0
Warning Letter	0	0
Bed Bugs — Initial Inspections	5	5
Bed Bugs — Recall Inspections	1	7
Warning Notice	0	1
Warning Letter	0	0
Fleas — Initial Inspections	2	0
Fleas — Recall Inspections	2	0
Warning Notice	1	0
Warning Letter	1	0
Dead Animals — Initial Inspections	1	3
Dead Animals — Recall Inspections	3	0
Warning Notice	1	0
Warning Letter	1	0

Fort Wayne-Allen County Department of Health — 1 E. Main St., 5th floor — (260) 449-7561 — [www.allencountyhealth.com](http://www.allencountyhealth.com)

## Vital Records

### Programs & Services

- Filing birth/death records
- Issuing certified birth/death certificates
- Preparing/filing Paternity affidavits
- Receipt of adoption records
- Birth record changes by court order
- Verifying birth/death information for government entities and social service agencies

### Staff

**Janet Westendorf, Dir.**  
*Sarah Castillo, Asst. Dir.*  
*Kristi Gephart*  
*Jennifer Pranger*  
*Shannon Ramos*

### Hours of Operation

Mon.-Fri.  
 8 a.m. to 4:30 p.m.

### Contact information

Voice: 449-7147  
 Fax: 449-3015

Vital Records are a person's first identity document and his or her last. A birth certificate breeds all others: Social Security cards, school records, driver's licenses, passports and employment records. In the United States, it means citizenship. A death certificate is the legal proof of death. It is used by the government to terminate benefits, settle estates and provide entitlements to families. Misused, it can trigger creation of false identity documents. By protecting the integrity of vital records, you strengthen the security of every United States identity document. Fail to, and we risk a system in the United States that can never be made safe.

Involvement of federal and state regulations will continue to have a large impact on the Vital Records Division.

### Goals for 2009

- **Communicate** and partner with appropriate personnel at hospitals and funeral homes to improve timeliness of reporting of birth and death records
- **Improve** accuracy of statistical data collected on birth and death documents
- **Provide** timely response for issuance of birth and death certificates
- **Retain** professional Vital Records staff to promote customer oriented service

## Vital Records – By the numbers

<b>BIRTHS</b>		
<b><u>Hospital and Home Delivery</u></b>		
	<b><u>2007</u></b>	<b><u>2008</u></b>
Parkview Main Hospital	1,139	715
Parkview North Hospital	1,043	1,744
St. Joseph Hospital	591	575
Lutheran Hospital	1,720	1,627
Dupont Hospital	2,409	2,301
Home Births	42	39
En route to hospital	0	0
<b>TOTAL BIRTHS</b>	<b>6,944</b>	<b>7,001</b>
Resident Births	5,275	5,321
Non-Resident	1,648	1,658
 <b><u>Born to married parents</u></b>		
Male	2,251	2,176
Female	2,115	2,118
<b><u>Unmarried parents</u></b>		
Male	1,314	1,391
Female	1,264	1,316

<b>DEATHS</b>		
<b><u>Causes (Medical)</u></b>		
	<b><u>2007</u></b>	<b><u>2008</u></b>
Heart Disease	623	827
Cancer	778	841
Apoplexy	184	201
Pneumonia	203	197
Diabetes	95	83
Cirrhosis	33	64
Chronic Obstructive Lung Disease	225	269
Premature Infant	37	34
Sudden Infant Death	3	4
HIV/AIDS	4*	6
Tuberculosis	2*	1
Influenza	1	4
Sickle Cell Anemia	2	0
All other causes	924	553

\*One death listed as Tuberculosis meningitis/HIV listed in both categories

<b>DEATHS</b>		
<b><u>Causes (Coroner)</u></b>		
	<b><u>2007</u></b>	<b><u>2008</u></b>
Accident	186	203
Homicide	30	26
Suicide	44	40
Undetermined	4	13
Pending	1	0

## Vital Records—By the numbers (cont'd)

<b><u>DEATHS (cont.)</u></b>		
	<b><u>2007</u></b>	<b><u>2008</u></b>
Male	1,678	1,816
Female	1,699	1,748
<b>TOTAL DEATHS</b>	<b>3,377</b>	<b>3,564</b>
Resident of Allen County	2,443	2,593
Non-Resident	934	971
Fetal Deaths	44	49

### **Deaths by Age Group**

	<b><u>2007</u></b>	<b><u>2008</u></b>
Under 28 days	42	46
29 days to 1 year	19	18
1 year to 14 years	15	26
15 years to 24 years	41	45
25 years to 44 years	142	162
45 years to 64 years	676	753
65 years to 74 years	618	609
75 years to 84 years	979	938
85 years and over	848	967

### **Location of Death**

	<b><u>2007</u></b>	<b><u>2008</u></b>
Parkview Main Hospital	734	878
Parkview North Hospital	51	43
Lutheran Hospital	636	618
St. Joseph Hospital	148	136
Dupont Hospital	19	36
VA Northern Indiana	37	26
Visiting Nurse and Hospice Home	355	339
Residence, nursing home, other	1,440	1,507

### **Miscellaneous**

	<b><u>2007</u></b>	<b><u>2008</u></b>
Paternity Upon Marriage	147	36
Paternity Affidavits	41	61
Correction Affidavits	47	49
Court Ordered Paternity	1,195	869
Adoptions	260	256
Revenue Collected	\$513,509	\$494,297

---

# Part III Financial Report

---

## Finance

**Staff**

*Carol Gigli, Dir.  
Penni Moran  
Joanna Baker  
Loretta Foy*

**Hours of Operation**

Mon.-Fri.  
8 a.m. to 5 p.m.

**Contact information**

Voice: 449-7358  
Fax: 427-1391

The Finance Division is responsible for coordinating financial and accounting functions for the day-to-day operation of FWACDOH. The division ensures compliance by meeting internal financial reporting requirements as those set by the Allen County Council, the Allen County Board of Commissioners and the ISDH.

The division is responsible for all personnel records, payroll, attendance records, and tracking of benefits for the 59 full-time employees, 6 part-time employees and 7 people employed contractually by the department.



## FINANCIAL STATEMENT

	<u>2007</u>	<u>2008</u>
Beginning Balance Jan. 1	\$1,500,807.76	\$1,910,535.80
Revenue	3,616,389.52	3,776,570.15
	<b>\$5,117,197.28</b>	<b>\$5,687,105.95</b>
Disbursements	-3,206,661.48	-3,652,901.69
	<b>\$1,910,535.80</b>	<b>\$2,034,204.26</b>

### REVENUE SOURCES

	<u>2007</u>	<u>2008</u>
General Property Taxes	\$2,350,160.08	\$2,408,099.85
Excise Tax	193,627.41	193,066.83
Financial Institution Tax	9,264.00	8,465.00
Commercial Vehicle Excise Tax	18,834.50	18,149.78
Miscellaneous Fees (See Addendum #1)	986,327.97	979,274.48
Fees (See Addendum #2)	17,606.24	40,123.02
Interest	40,280.72	14,147.54
Infectious Disease Clinic (IDC)	288.60	64.50
Adjustments	0.00	115,179.15
<b>TOTAL</b>	<b>\$3,616,389.52</b>	<b>\$3,776,570.15</b>

### DISBURSEMENTS

	<u>2007</u>	<u>2008</u>
Department of Health	\$2,631,398.39	\$2,914,030.12
Vector Control	153,380.24	286,857.67
I.D.C. (formerly TB Clinic)	420,263.85	452,013.90
TB Education Grant	1,619.00	0.00
<b>TOTAL</b>	<b>\$3,206,661.48</b>	<b>\$3,652,901.69</b>

### FEES (ADDENDUM #1)

	<u>2007</u>	<u>2008</u>
Vital Records	\$486,851.80	\$455,149.80*
Food Permits	415,178.17	440,891.02**
Swim. Pool Permits	37,395.00	38,105.00
Water Tests	5,256.00	2,916.00
Septic Fees	19,375.00	15,365.00
Vaccinations	13,747.00	13,692.66
Tattoo	8,525.00	13,155.00
<b>TOTAL</b>	<b>\$986,327.97</b>	<b>\$979,274.48</b>

### MISCELLANEOUS REVENUE (ADDENDUM #2)

	<u>2007</u>	<u>2008</u>
Travel Reimbursement	\$527.85	\$313.74
Workforce Capacity Grant	0.00	19,015.00
West Nile Virus Reimbursement.	567.00	1,000.00
Refugee Clinic/Physician Grant Reimb.	0.00	5,975.00
HUD Grant Reimbursement	0.00	12,290.62
PERF Refund	13,906.45	0.00
Copies/Miscellaneous Receipts	2,604.94	1,528.66
<b>TOTAL</b>	<b>\$17,606.24</b>	<b>\$40,123.02</b>

\*An additional \$38,384.50 was collected in 2008 from Vital Records which is state mandated to the Coroner Continuing Education Fund.

\*\*An additional \$77,801.23 was collected in 2008 from food permits. By local ordinance, these funds are set aside to help support a food inspector on the Local Health Maintenance Fund.

## FUND REPORT

	<u>2007</u>	<u>2008</u>
<b>LOCAL HEALTH MAINTENANCE FUND</b>		
Beginning Balance, Jan. 1	<b>\$267,301.72</b>	<b>\$318,187.80</b>
Receipts		
<i>State Fund</i>	50,000.00	37,500.00
<i>Tobacco Settlement Monies</i>	22,672.00	17,001.00
<i>PERF Over-collection</i>	670.26	0.00
<i>Interest</i>	8,861.25	3,243.32
<i>Fees - Food Permit</i>	94,504.92	77,801.23
	<b>\$444,010.15</b>	<b>\$453,733.36</b>
Disbursements	-125,822.35	-153,856.76
Balance, Dec. 31	<b>\$318,187.80</b>	<b>\$299,876.60</b>
<b>IMMUNIZATION DONATION FUND</b>		
Balance, Jan. 1	<b>\$18,420.66</b>	<b>\$15,154.43</b>
Donations Received	5,186.66	3,850.81
	<b>23,607.32</b>	<b>19,005.24</b>
Disbursements	-8,452.89	-4,043.35
Balance, Dec. 31	<b>\$15,154.43</b>	<b>\$14,961.89</b>
<b>STD CLINIC DONATION FUND</b>		
Balance, Jan. 1	<b>\$8,563.64</b>	<b>\$12,301.05</b>
Donations Received	5,617.15	4,461.93
	<b>14,180.79</b>	<b>16,762.98</b>
Disbursements	-1,879.74	-5,208.32
Balance, Dec. 31	<b>\$12,301.05</b>	<b>\$11,554.66</b>

	<u>2007</u>	<u>2008</u>
<b>Allen County Onsite Waste Water Management</b>		
Balance, Jan. 1	<b>\$62,853.46</b>	<b>\$63,841.08</b>
Receipts	24,982.98	42,849.55
Interest	2,503.07	678.54
	<b>91,339.51</b>	<b>107,369.17</b>
Disbursements	-27,498.43	-43,459.70
Balance, Dec. 31	<b>\$63,841.08</b>	<b>\$63,909.47</b>
<b>Tobacco Master Plan</b>		
Balance, Jan. 1	<b>\$147,970.62</b>	<b>\$146,185.71</b>
PERF Over-collection	528.41	0.00
Receipts	122,855.26	122,354.00
Auditor Correction	0.00	111,556.12
	<b>\$271,354.29</b>	<b>\$380,095.83</b>
Disbursements	-125,168.58	-136,218.36
Balance Dec. 31	<b>\$146,185.71</b>	<b>\$243,877.47</b>
<b>Coroner's Death Certification Fund</b>		
Balance, Jan. 1	<b>\$1,671.00</b>	<b>\$2,850.75</b>
Receipts	26,772.00	38,384.50
Disbursements	-14,438.25	-38,120.25
Balance, Dec. 31	<b>\$2,850.75</b>	<b>\$3,115.00</b>
<b>Septic Fund</b>		
Beginning Balance, Jan. 1	<b>\$17,180.67</b>	<b>\$18,429.76</b>
Receipts	17,498.82	30,937.50
Interest	748.42	261.56
	<b>34,427.91</b>	<b>46,628.82</b>
Disbursements	-16,998.15	-11,670.36
Balance, Dec. 31	<b>\$18,429.76</b>	<b>\$37,958.46</b>
<b>Public Health/Bioterrorism Coordinator Grant</b>		
Jan. 1 through Dec. 31, 2007	<b>\$ 0,000.00</b>	<b>\$2,926.94</b>
Receipts	\$32,254.47	\$36,195.24
	<b>\$32,254.47</b>	<b>\$39,122.18</b>
Disbursements	-29,327.53	-39,122.18
Balance, Dec. 31	<b>\$2,926.94</b>	<b>\$0,000</b>

	<u>2007</u>	<u>2008</u>
<b>TB Emergency/Cooperative Grant</b>		
Beginning Balance, Jan. 1	\$ (6,514.36)	\$ (1,439.90)
Receipts	39,906.00	43,518.85
	<u>\$33,391.64</u>	<u>\$42,078.95</u>
Disbursements	-34,831.54	-48,969.55
<b>Balance, Dec. 31</b>	<b>\$(1,439.90)</b>	<b>\$(6,890.60)</b>

**St. Joseph Community Health Foundation**

Balance, Jan. 1	\$30,006.86	\$51,748.38
Receipts	102,120.12	19,765.04
PERF Over-Collection	252.38	0.00
	<u>\$132,379.36</u>	<u>71,513.42</u>
Disbursements	-80,630.98	-59,029.80
<b>Balance Dec. 31</b>	<b>\$51,748.38</b>	<b>\$12,483.62</b>

**STD Program Fund**

Balance, Jan. 1	\$(1,623.55)	\$(1,045.14)
Receipts	136,584.76	147,913.72
	<u>\$134,961.21</u>	<u>\$146,868.58</u>
Disbursements	-136,006.35	-168,365.73
<b>Balance, Dec. 31</b>	<b>\$(1,045.14)</b>	<b>\$(21,497.15)</b>

**Substance Abuse Prevention & Treatment Program**

Balance, Jan. 1	\$(1,111.54)	\$(2,846.64)
Receipts	92,947.64	91,538.76
	<u>\$91,836.10</u>	<u>\$88,692.12</u>
Disbursements	-94,682.74	-101,214.03
<b>Balance, Dec. 31</b>	<b>\$(2,846.64)</b>	<b>\$(12,521.91)</b>

**HIV/AIDS Program Fund**

Beginning Balance, Jan. 1	\$55,242.69	\$38,977.62
Receipts	163,794.60	156,905.64
	<u>\$219,037.29</u>	<u>\$195,883.26</u>
Disbursements	-180,059.67	-221,195.13
<b>Balance, Dec. 31</b>	<b>\$38,977.62</b>	<b>\$(25,311.87)</b>

	<u>2007</u>	<u>2008</u>
<b>Refugee Interpreter Grant/SJCHF</b>		
Beginning Balance, Jan. 1	\$ 00.00	\$00,000.00
Receipts	00.00	39,600.00
	00.00	<u>\$39,600.00</u>
Disbursements	00.00	-15,020.91
<b>Balance, Dec. 31</b>	<b>\$00.00</b>	<b>\$24,579.09</b>
<b>Refugee Health Assistance/FSSA</b>		
Beginning Balance, Jan. 1	\$00.00	\$00,000.00
Receipts	00.00	80,000.00
	00.00	<u>\$80,000.00</u>
Disbursements	00.00	-1,375.00
<b>Balance, Dec. 31</b>	<b>00.00</b>	<b>\$78,625.00</b>