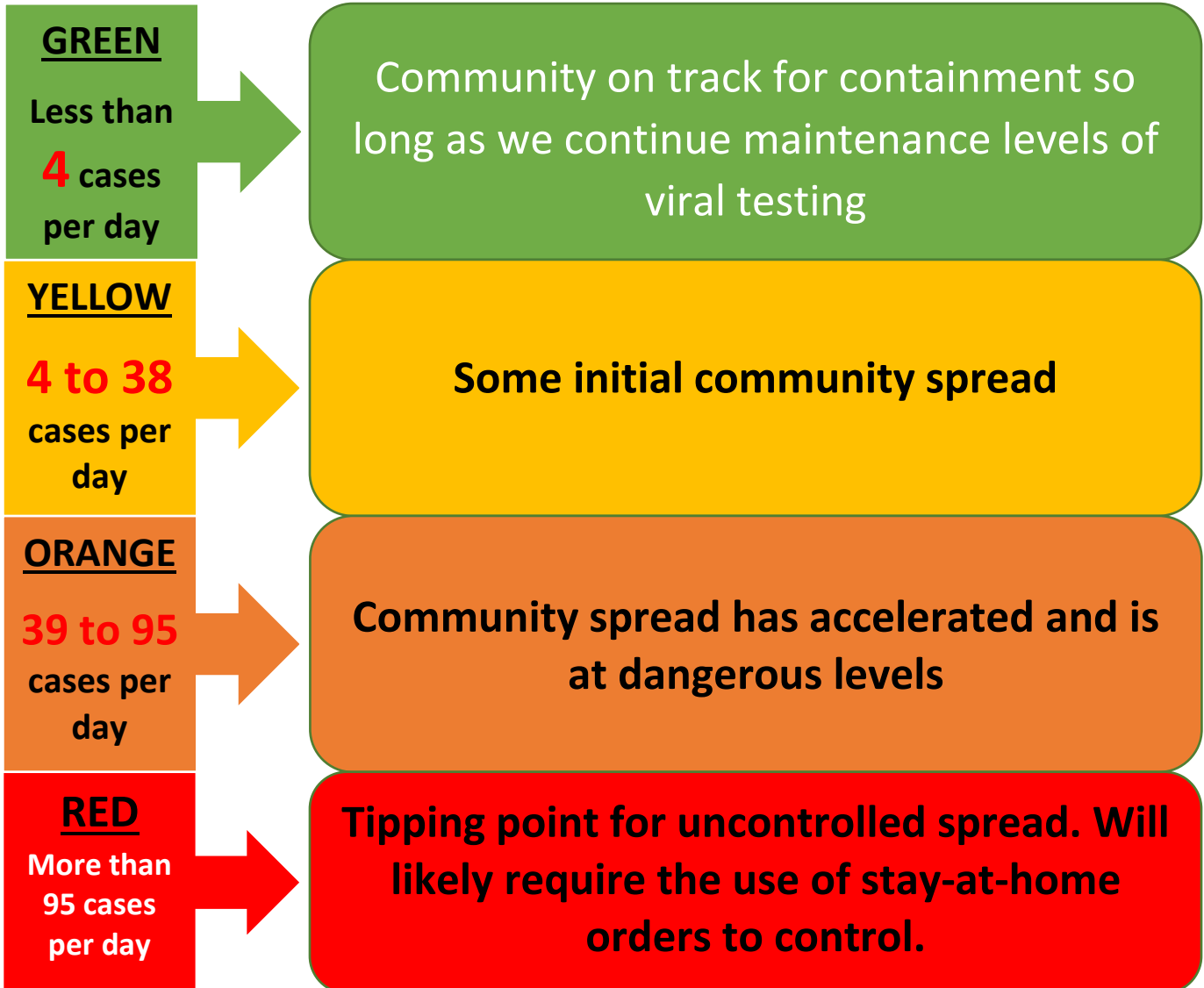




Allen County Case Incidence Levels

COMMUNITY LEVELS AS GUIDANCE FOR DECISION-MAKING

These levels are presented as a framework for better understanding the spread of COVID-19 in our community. As community spread accelerates, it becomes increasingly difficult to control the spread of disease with traditional public health tools like testing, contact tracing, isolation and quarantine. Once we reach RED level, it may require a return to closures of schools, businesses and government buildings in order to control spread. We urge decision makers throughout the community to take steps to control spread to avoid reaching that level as we continue our vigorous public health activities.



PRIMARY METRIC:

New case rate
(7-day moving average)

SUPPORTING METRIC:

- Death rate (7-day moving average x 100) – if greater than case rate, may indicate undercounting
- New hospital admission (7-day moving average – trend & scope)
- Test positivity (7-day moving average) – if greater than 10%, may indicate undercounting

Source: Key Metrics for COVID suppression. Harvard Global Health Institute. (The calculations above are based on an Allen County population size of 380,000.)